

Prices Include:

- 1.) Delivered fully constructed and leveled with a mixture of leveling materials
- 2.) Choice of metal roof or shingles / Galvalume metal roof only on Pro Series
- 3.) 5 Year warranty / 1 Year warranty on Pro Series
- 4.) Quality Amish craftsmanship and incredible service

Code:CSA
Arkansas



A. PICK "YOUR" BUILDING SIZE AND STYLE

PREMIUM SERIES

As per Lowe's Display / Painted or Urethane

NEW PRO SERIES

Economy Buildings

UTILITY



Size	Model	Retail
8ft.x12ft.	CS01	\$4697
10ft.x12ft.	CS02	\$5692
10ft.x16ft.	CS03	\$6419
12ft.x20ft.	CS04	\$8949
12ft.x32ft.	CS05	\$12,678
14ft.x24ft.	CS06	\$13,814
14ft.x40ft.	CS07	\$21,290
16ft.x24ft.	CS08	\$16,105
16ft.x40ft.	CS09	\$24,415

UTILITY PRO SERIES



Size	Model	Retail
8ft.x8ft.	PSA13	\$2947
8ft.x12ft.	PSA14	\$3800
10ft.x12ft.	PSA15	\$4652
10ft.x16ft.	PSA16	\$5274
12ft.x20ft.	PSA17	\$6428
12ft.x32ft.	PSA18	\$10,636

SIDE LOFTED BARN



Size	Model	Retail
8ft.x12ft.	CS21	\$5416
10ft.x12ft.	CS22	\$6321
10ft.x16ft.	CS23	\$7138
12ft.x16ft.	CS24	\$8754
12ft.x24ft.	CS25	\$12,332
12ft.x32ft.	CS26	\$15,838
14ft.x20ft.	CS27	\$14,179
14ft.x32ft.	CS28	\$19,337
16ft.x32ft.	CS29	\$22,320
16ft.x44ft.	CS30	\$29,741

SIDE LOFTED BARN PRO SERIES



Size	Model	Retail
8ft.x12ft.	PSA07	\$4581
10ft.x12ft.	PSA08	\$5362
10ft.x16ft.	PSA09	\$6017
12ft.x16ft.	PSA10	\$7440
12ft.x24ft.	PSA11	\$10,494
12ft.x32ft.	PSA12	\$13,494

END LOFTED BARN



Size	Model	Retail
8ft.x12ft.	CS32	\$5114
10ft.x12ft.	CS33	\$6020
10ft.x16ft.	CS34	\$6837
12ft.x16ft.	CS35	\$8452
12ft.x24ft.	CS36	\$12,030
12ft.x32ft.	CS37	\$15,537
14ft.x20ft.	CS38	\$13,876
14ft.x32ft.	CS39	\$19,034
16ft.x32ft.	CS40	\$22,017
16ft.x44ft.	CS41	\$29,439

END LOFTED BARN PRO SERIES



Size	Model	Retail
8ft.x8ft.	PSA19	\$3428
8ft.x12ft.	PSA20	\$4280
10ft.x12ft.	PSA21	\$5061
10ft.x16ft.	PSA22	\$5753
10ft.x20ft.	PSA23	\$7227
12ft.x16ft.	PSA24	\$7138
12ft.x20ft.	PSA25	\$8594
12ft.x24ft.	PSA26	\$10,192
12ft.x28ft.	PSA27	\$11,293
12ft.x32ft.	PSA28	\$13,193

Shown with 2 paint colors, this is not an available option on the Pro Series

MINI BARN



Size	Model	Retail
8ft.x12ft.	CS43	\$4368
10ft.x12ft.	CS44	\$5310
10ft.x16ft.	CS45	\$6197
10ft.x20ft.	CS46	\$7067
12ft.x16ft.	CS47	\$7192
12ft.x20ft.	CS48	\$8310

MINI BARN PRO SERIES



Size	Model	Retail
8ft.x12ft.	PSA01	\$3463
10ft.x12ft.	PSA02	\$4190
10ft.x16ft.	PSA03	\$4936
10ft.x20ft.	PSA04	\$5682
12ft.x16ft.	PSA05	\$5966
12ft.x20ft.	PSA06	\$6747

PORTABLE GARAGE



Size	Model	Retail
12ft.x24ft.	CS49	\$13,158
14ft.x24ft.	CS50	\$15,376
14ft.x32ft.	CS51	\$19,105
14ft.x40ft.	CS52	\$22,852
16ft.x28ft.	CS53	\$17,668
16ft.x40ft.	CS54	\$25,764

PLAY HOUSE



Size	Model	Retail
8ft.x12ft.	CS17	\$6233
8ft.x16ft.	CS18	\$7067
10ft.x12ft.	CS19	\$6854
10ft.x16ft.	CS20	\$8310
10ft.x20ft.	CS99	\$9766

SEE BACK SIDE FOR ALL COLOR CHOICES AND BUILDING OPTIONS

B. PICK YOUR COLORS *Colors may vary due to print

PAINT COLORS



ivy green



light stone



burnished
slate



ash gray



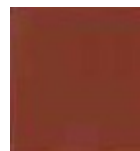
charcoal



buckskin



koko brown



rustic red



berry



gallery blue



white

METAL COLORS



ivy green



burnished
slate



rustic red

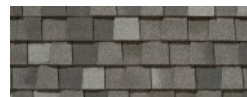


polar white

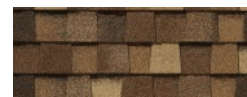


galvalume

SHINGLE COLORS



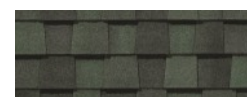
Gray



Brown



Black



Green

URETHANE COLORS

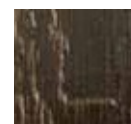
Not available with Pro Series models



NATURE WALK



DRIFT WOOD



EBONY



BUTTER NUT

C. STANDARD FEATURES

PREMIUM SERIES

FLOOR: 4x6 treated runners, 2x6 treated floor joist, 16" O/C,

3/4" LP Legacy shed floor.

FASTENING SYSTEM: All exposed fasteners are held together with hot dip

galvanized nails and deck screws. All of our nails are ring shank; this has a

similar effect as a screw. Diamond tread plate included.

ROOF: Metal or shingles. On metal roofs a vapor barrier is

installed between sheeting and metal.

WALLS: Wall studs are 16" O/C with a double stud every 4-foot

where the siding joint is at.

PAINTED SIDING: LP SmartSide is rot and termite resistant and is used on

all painted barns.

PRO SERIES

FLOOR: 4x4 treated runners, 2x4 treated floor joists, 16" O/C, 5/8" T&G shed floor

WALLS: 2x4 studs, 24" O/C, gable vents, painted Smartside siding (solid color)

ROOF: 2x4 rafters, 24" O/C, 7/16 OSB sheeting, 15 year Galvalume metal roof

Only available for mini barns,

lofted & side lofted barns, utility,

side utility and only available from 8x8 to 12x32.

Block Package:

8' wide thru 16' wide / Covers up to 24" out of level

CSO14 21'-30' Length - **\$169**

CSO15 31'-40' Length - **\$213**

CSO16 41'-52' Length - **\$294**

D. OPTIONS

CSO01 6x4 Ramp - **\$267**

CSO02 6x8 Ramp - **\$533**

CSO03 8x4 Garage Ramp - **\$445**

CSO04 9-lite Door - **\$489**

CSO05 Solid Steel Door - **\$355**

CSO06 9x7 Garage Door - **\$817**

CSO07 Standard 3' Door - **\$161**

CSO08 Standard 6' Double Door - **\$303**

CSO09 3' Transom Window - **\$134**

CSO10 18"x28" Window - **\$125**

CSO11 24"x36" Window - **\$152**

*Windows: Brown or White

(Call for pricing on insulated windows)

CSO12 Ground Anchors - **\$89 each.**

E. DELIVERY



Building will arrive fully constructed at the customers site on a truck and trailer similar to the one pictured. We will need prior clearance to install the building. Concrete 2" pavers should be set under the buildings runners, supplied by the customer. They are available from Lowe's to purchase.

Ask for your Lowe's PSE to order your building today!

For additional info go to www.americasbuildings.com - A site exclusively for Lowe's.