

# **THE ELIZABETH BOWERS ZAMBIA EDUCATION FUND**



## **2016 ANNUAL REPORT**

Prepared by Michal Wert  
February 2017

## CONTENTS

EBZEF MISSION.....	1
BACKGROUND .....	1
SIGNIFICANT 2016 EVENTS .....	2
A SECONDARY SCHOOL FOR LUMWANA WEST .....	2
SCIENCE LAB FACILITY .....	3
PRESCHOOL IN ITS OWN CLASSROOM AT LAST .....	3
SECONDARY SCHOOL SCHOLARSHIPS END .....	4
UPDATED COMMUNICATIONS .....	4
PEACE CORPS ANNIVERSARY .....	4
BETH'S GIRLS .....	5
LUMWANA WEST MEMORIAL LIBRARY.....	8
ADMINISTRATION.....	8
EBZEF PARTNERS.....	8
BOARD OF DIRECTORS.....	9
EBZEF VOLUNTEERS.....	9
EBZEF COMMITTEES .....	9
Executive Committee, Linda Bowers, chair.....	9
Finance Committee, Gerry Bowers, chair .....	9
Education Committee, Angela Wanak, chair.....	9
Grant Committee, Linda Bowers/Karen Chittick, co-chairs .....	10
Fundraising Committee, Linda Bowers, chair .....	10
Library Committee, Karen Chittick, chair.....	11
Technology Committee, Michal Wert, chair.....	12
Intercultural Advisory Committee, Fordson Kafweku/Dan Irvine, co-chairs.....	12
FINANCIAL STATUS.....	12
LOOKING FORWARD TO 2017 .....	13
EDUCATION.....	13
SECONDARY SCHOOL.....	13
LIBRARY .....	14
PRESCHOOL .....	14
FUNDRAISING.....	14
ADMINISTRATION .....	14
ATTACHMENT A .....	15
EBZEF BOARD OF DIRECTORS.....	15
ADVISORY BOARD .....	15

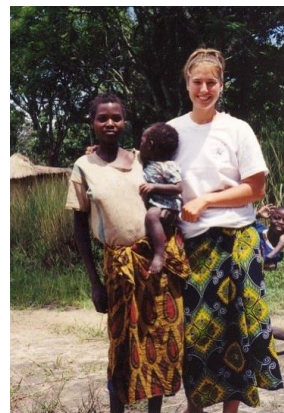


## EBZEF MISSION

The mission of the Elizabeth Bowers Zambia Education Fund is to empower women, children, and their community in Lumwana West, Zambia, to break the cycle of poverty through education.

## BACKGROUND

The Elizabeth Bowers Zambia Education Fund (EBZEF) is a 501(c)(3) public charity operating under the laws of the State of Oregon. It began in 2003 in memory of Elizabeth Bowers by her family and friends. Beth died as a result of a bicycle accident in 2002 while serving as a Peace Corps Volunteer in Lumwana West, in NW Zambia, Africa.



EBZEF, building partnerships with Lumwana West and several other organizations, has accomplished so much since 2003:

- Over 315 “Beth’s Girls” have received EBZEF scholarships to attend secondary school, and 65 girls completed high school.
- Twenty-one girls have received scholarships for college or other training.
- Nineteen girls are attending or have graduated from college/vocational school.
- The Elizabeth Bowers Memorial Library, second largest library in the province, was constructed in 2008 and includes solar panels that brought electricity to the village.
- The library was stocked with 22,000 volumes of books, furniture, and computers.
- A preschool program, started in 2010, has expanded every year since and is now enrolling 65 children. In 2014 it was officially included as part of the government-approved Primary School in the village.
- Lumwana West has a dedicated preschool building, with 2 more classrooms in the planning stage.
- All grades through Grade 12 are now offered in the village, reducing the need for children to attend expensive secondary boarding schools.
- A three-classroom high school science building is under construction by Engineers Without Borders (EWB).
- Beth’s Girls staff the library and the preschool and serve as role models for other girls in the community.
- EBZEF is fully transparent, with a strong presence on social media. It is entirely run by volunteers and funded by generous donors.

EBZEF is now working to bring a full Secondary School to the community. This will require construction of more classrooms, water and sanitation facilities, and teachers’ housing. To make this a reality, EBZEF established a partnership with Lumwana West and World Vision to raise funds and build the additional needed facilities. This is a priority for EBZEF and its supporters for the next several years.

## SIGNIFICANT 2016 EVENTS

### A SECONDARY SCHOOL FOR LUMWANA WEST

Lumwana West clearly values education. EBZEF scholarships for girls helped provide an education to an underserved population of the village. But the community has long had a dream of providing a secondary school education within the village, so that all their children can achieve a full education without the hardship or prohibitive expense of distant boarding schools. Finally, Lumwana West and EBZEF are working with World Vision to make that community dream come true.

So much had already been done in the village to prepare for establishing a full secondary school - the fully stocked Memorial library with electricity, the preschool, the three-room science building under construction. All this work resulted in certification by the Ministry of Education (MOE) to teach grades 10 (2014), 11 (2015), and 12 (2016) in the village.

This success, however, also brought challenges. Classrooms are overcrowded because there simply are not enough rooms to accommodate all the children. There is not enough teacher's housing to attract new teachers. And infrastructure continues to be a challenge – clean water, sanitation facilities, and electricity.

For the past year, EBZEF and World Vision have been conducting a major fund-raising effort to secure the \$1.7 million needed for Lumwana West to become a fully operational secondary school. The project is being conducted in three phases:

PHASE	PROJECT ELEMENT	COST
I	Two 3-room classroom blocks, two teachers' houses, one 2-room preschool classroom block	<b>\$340,000</b> <b>*DONE*</b>
II	Two 3-room classroom block, seven teachers' houses, office block/furniture, water, two lavatories	\$950,000
III	One 3-room classroom block, computer lab/computers, school hall, internet	\$430,000
<b>Total Project Cost</b>		<b>\$1,720,000</b>

Phase I was completed in 2016 and includes two 3-classroom buildings and two teachers' houses. The ablution block (lavatory) for boys in Phase II is also complete. The buildings will be ready for occupancy as soon as they are accepted by the MOE.



3-classroom block



One of two new teachers' houses

Phase II is already underway with the first of two lavatories completed. Water, electricity, and “soak away (septic) fields” will be constructed in Phase II. The final Phase III will provide another three-room classroom block, computer lab with computers, school hall, and internet service, and will be undertaken when funding is available. Furnishings, of course, also need to be provided.

We are fortunate to have World Vision overseeing all bidding, construction, and quality control for this project. They have worked extensively with the MOE and understand what is required to build facilities that meet MOE standards. It is imperative to have strong project management and administration in Zambia, to provide daily construction management and to ensure that our limited dollars are effectively and efficiently spent. World Vision has also been a powerful funding partner, tapping into its own network of funding resources and helping EBZEF to be more effective in local fund-raising efforts.

Now that the village dream is materializing, there is much excitement in the Lumwana West community. The solution to extreme classroom overcrowding and severely limited teacher housing is in sight.

### **SCIENCE LAB FACILITY**

Work continues on construction of a science lab facility in Lumwana West. **The Mid-Columbia Chapter of Engineers Without Borders**, under the leadership of **Lisa Dukes**, designed and is constructing a 3-classroom high school science building. This is a huge undertaking for village builders who are making bricks and constructing the 43 m x 9.5 m (141 ft x 31 ft) facility by hand. This building will be an important part of the complete secondary school complex.



EWB science lab foundation,  
note handmade bricks  
Boys ablution block, background

### **PRESCHOOL IN ITS OWN CLASSROOM AT LAST**



Preschool classroom built in 2016

Now in its sixth year, the Lumwana West Preschool finally has its own classroom building. **Baal Dan Charities** funded construction of the building, as well as classroom furniture and supplies. The children of the **Salem Schirle Elementary School** held its annual penny drive to help purchase furniture and supplies for the new classroom.

An additional two-room preschool building will be constructed nearby in 2017, with funding again provided by Baal Dan Charities. The same contractor that built the secondary school buildings will construct the preschool. Construction will begin in early 2017.

In 2016, the preschool enrolled 65 children in three preschool classes. This continues to be a popular program and an opportunity for Beth's Girls to give back by serving as preschool aides.

## **SECONDARY SCHOOL SCHOLARSHIPS END**

A complete secondary school curriculum in Lumwana West eliminates the need to send Beth's Girls, as well as all children in the village, to expensive and distant boarding school to complete their high school education. In anticipation of launching the secondary school program, EBZEF phased out secondary school scholarships, ensuring that all girls accepted into the scholarship program would be supported through high school graduation; 2016 was the last year of the program. Support for Beth's Girls will continue, however, as girls pursue college/vocational training. All Beth Girls will be supported for education beyond high school as funds are available.



New preschool in use, with handmade mukwa tables & chairs

It is greatly satisfying that the end of EBZEF's secondary school scholarship program has not affected the number of girls going to school in Lumwana West. The way the village views the education of women has changed dramatically since the time that Beth served with Peace Corps in the village. The entire EBZEF community has helped to change the way the women view themselves as educated leaders and contributors. From preschool, through basic and secondary school, through college and vocational training, EBZEF's vision of ***Educating the Whole Girl*** has come into being. Beth's Girls are truly role models to the community, to Zambia, and to all of us.

## **UPDATED COMMUNICATIONS**



Social media consultant **Jennifer Bowers** helped develop a logo to "Help EBZEF educate the Whole Girl!" She continues to monitor and update EBZEF's presence on social media, including Facebook, LinkedIn, and Twitter. EBZEF has over 1,600 followers on Facebook.

The EBZEF Fund-Raising Committee is making a series of short videos with a theme of hope - "A Village's Dream." Tentative topics include Beth's Life and Legacy, the Beth's Girls Scholarship Program, the Elizabeth Bowers Memorial Library, the Preschool, and the Lumwana West dream of Building a Secondary School. A 2-3-minute video is being developed for each topic. Jennifer is working with **Bob Parker** from **CCTV** to edit and complete the videos.

## **PEACE CORPS ANNIVERSARY**

Beth's Peace Corps group celebrated its 15<sup>th</sup> anniversary from its initial induction into service in 2001 in NW Zambia. In 2017, EBZEF will celebrate 15 years in the community of Lumwana West, where Beth served as a Peace Corps Volunteer. EBZEF was created and its many volunteers and donors have worked hard to sustain Beth's vision of global peace and



understanding. In the words of Mahatma Gandhi, “The best way to find yourself is to lose yourself in the service of others.” Beth lost herself in Lumwana West.



Beth's Peace Corps induction group  
Beth, front row, 3<sup>rd</sup> from left



Beth with host family

Digging fish ponds in Lumwana West



Stocking fish in new ponds



## BETH'S GIRLS

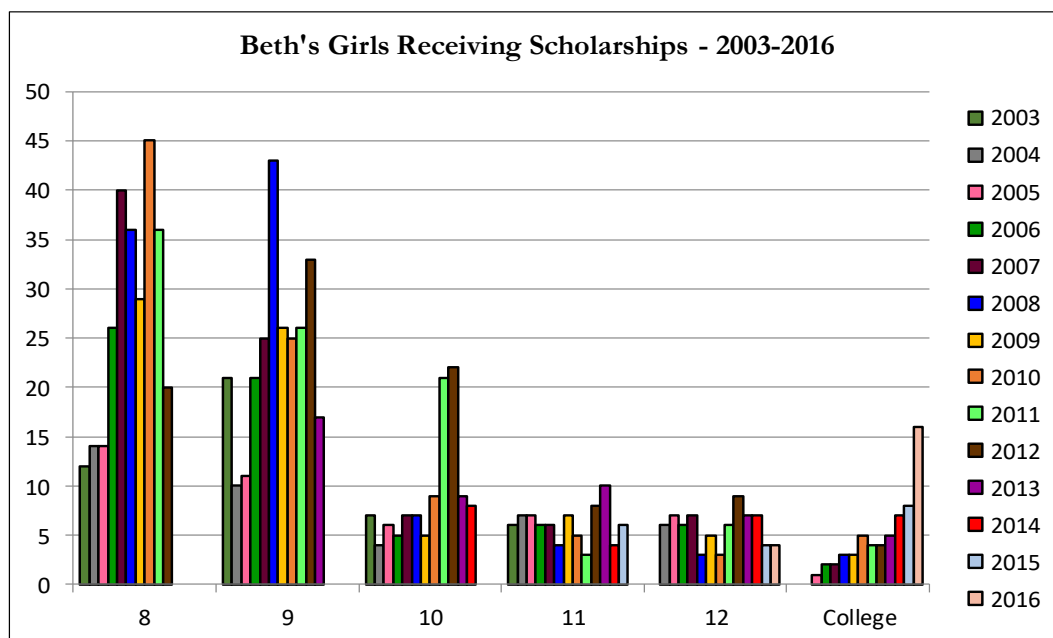
Since 2003, over 315 Beth's Girls have received EBZEF scholarships. Of these, 65 overcame many challenges and completed grade 12; 19 girls have gone on to tertiary programs, including teaching, medicine, sociology, food service, and business. EBZEF scholarships were important to help build self-esteem. As more girls receive an education, there are fewer girls dropping out of school because of early marriages and pregnancies. Beth's Ladies (Beth's Girls who have completed advanced educations with support from EBZEF) are modeling a new lifestyle: school first, then career, then marriage, then children. They are not only role models, but are becoming leaders in Lumwana West.

The community has asked EBZEF to sustain college scholarships for Beth's Girls as long as possible, and we have been able to accommodate all requests so far. The following table and graph show the number of girls receiving an EBZEF scholarship by grade since the beginning of the program. Educational scholarships included school fees, books and

supplies, uniforms, tutorial and exam fees, plus room and board for students at Mwinilunga High School and Mukenge Girls School.

### EBZEF Scholarships Awarded 2003-2016

Grade	2003	2004	2005	2006	2007	2008	2009	2010	2011	2012	2013	2014	2015	2016	Total
8	12	14	14	26	40	36	29	45	36	20	0	0	0	0	272
9	21	10	11	21	25	43	26	25	26	33	17	0	0	0	258
10	7	4	6	5	7	7	5	9	21	22	9	8	0	0	110
11	6	7	7	6	6	4	7	5	3	8	10	4	6	0	79
12	0	6	7	6	7	3	5	3	6	9	7	7	4	4	74
College	0	0	1	2	2	3	3	5	4	4	5	7	8	16	60
<b>Total</b>	<b>46</b>	<b>41</b>	<b>46</b>	<b>66</b>	<b>87</b>	<b>96</b>	<b>75</b>	<b>92</b>	<b>96</b>	<b>96</b>	<b>48</b>	<b>26</b>	<b>18</b>	<b>20</b>	<b>853</b>



The final class of Beth's Girls completed their studies at Mwinilunga High School in 2016. **Mulenga Chilufya, Brenda Sambaulu, Karre Sweta, and Gloria Njolomba** look forward to continuing their education. Beth's Girls **Jean Mutepeka** and **Belinda Kalumba** have taken exams to obtain high school certificates. They are currently teachers' aides in the preschool, but would like to go on to college and become teachers.

The following Beth's Girls received scholarships in 2016 for higher education or training:

- **Charity Mashata** completed year two of a three-year program at Immaculata Visitation Teachers College, studying physical and religious education.
- **Kutemba Njolomba** completed year three of a four-year degree program for a Bachelor of Education in Natural



Charity

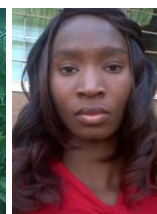
Kutemba

Sciences at Mukuba University's College of Education. She plans to teach secondary school science and math.

- **Stella Masanyinga** completed her first year at the Immaculata Visitation Teacher's College.
- **Ruth Sanama** completed her first year at the SW College of Education.
- **Sandra Kalumba** completed her first year at the SW College of Education.
- **Rachel Njolomba** completed her first year at the SW College of Education.
- **Visaka Kapalu** finished her first term of a seven-year program at Lusaka Apex Medical University.



Stella



Ruth



Sandra



Visaka

Beth's Ladies are Beth's Girls who have completed education or training beyond secondary school. The list of Beth's Ladies continues to grow:

- **Julia Salumawu** completed her studies in physiotherapy at Evelyn Hone College in 2015. She successfully completed exams in 2016.
- **Melba Chitala** completed a three-year program and an internship at the Roan Antelope School of Midwifery.
- **Prudence Masanyinga** completed a five-year program in Sociology at the Mulungushi University School of Distance. She works for World Vision Zambia's Lunga Area Development Program as a social development worker.
- **Sandra Kamulosu** graduated from the Zambia College of Open Learning with a secondary teaching diploma. She previously graduated from the Library Studies Program at Zamtel College in Ndola in 2010, and is the Librarian for the Elizabeth Bowers Memorial Library.
- **Agatha Sangenjo** completed a three-year program studying English and religion at the Zambia College of Open Learning. She hopes to become a secondary school teacher.
- **Priscovia Sangenjo** completed practice teaching at Solwezi Teacher's College and graduated as a secondary school teacher. She now teaches language and religion at Lumwana West Secondary School.



Julia



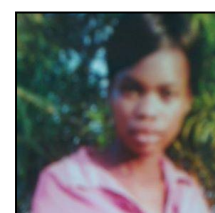
Melba



Prudence



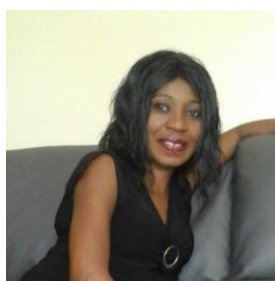
Sandra



Agatha



Priscovia



**Mary Lundeba, PhD**, was Beth's aquaculture trainer, and one of the first women supported by EBZEF. Mary is currently an Aquaculture Consultant for the WorldFish Center in Lusaka, Zambia. She has a dream of one day establishing her own fish farming company in Zambia.



## LUMWANA WEST MEMORIAL LIBRARY

The Memorial Library is a valuable resource to the community, used heavily by students and all villagers. EBZEF continues to pay Librarian Sandra Kamulousu's salary, as well as the costs of operating and maintaining the Library. Sandra completed a distance-learning program for teaching/library science in 2016, which will make her eligible to be hired by the MOE as Librarian for the Memorial Library.

In the summer of 2016, thieves broke into the Library and stole four computers. EBZEF provided funds to pay for the damage and to burglar-proof the Library. An anonymous donor provided funds to replace the computers, and Sandra purchased a locking file cabinet to store the computers at night. EBZEF is



Memorial Library

now paying for a night watchman, which should protect the library in the future. EBZEF also purchased two Chambers dictionaries as requested by the community.



New Library computers



Inside the Library

## ADMINISTRATION

### EBZEF PARTNERS

The **Lumwana West PTA/Library Committee** continues to be an important EBZEF partner, providing advice and serving as a liaison with the community. They are important partners throughout the secondary school project.

**World Vision (WV)** has been a significant partner with EBZEF, providing in-Country management for the secondary school project and local coordination with Lumwana West. They are very supportive of fund-raising for the project, both assisting EBZEF in its efforts as well as encouraging donations associated with its own organization.

**Engineers Without Borders (EWB)** shares EBZEF's commitment to Lumwana West to construct buildings and infrastructure to bring a secondary school to the village. They are committed to completion of the science buildings, using all local labor and resources.

**Baal Dan Charities** is a long-time supporter of EBZEF's efforts to initiate a preschool in Lumwana West. They have provided grants to construct the dedicated preschool buildings and to provide furnishings for the classrooms.

**Peace Corps** is an original partner and continuing supporter of EBZEF.

## **BOARD OF DIRECTORS**

The Board provides direction and oversight for the EBZEF program. Formal Board meetings were held on March 19 and October 15, 2016. Remote Board members participate in regularly scheduled meetings via Skype or telephone. All Board members annually sign a Conflict of Interest statement. The Board approves an annual budget and an annual report that summarizes major events, significant activities, and the financial health of EBZEF. Materials are available at [www.bethsgirls.org](http://www.bethsgirls.org). Members of the Board of Directors and the Advisory Board are listed in Attachment A.

## **EBZEF VOLUNTEERS**

**Valerie Watson**, an Administrative Assistant in the Atkinson Graduate School of Management, has been an invaluable volunteer, working as EBZEF's Office Assistant.

**Cassandra Farrin** continues her superb work designing the EBZEF newsletter THE PROTEA, our brochure, and other projects. She joined the Advisory Board in 2016.

## **EBZEF COMMITTEES**

### **Executive Committee, Linda Bowers, chair**

*Purpose: Make decisions and act on behalf of EBZEF in emergencies and between Board meetings. Offer direction to the various EBZEF committees in line with the mission, values, and goals of the organization.*

The Executive Committee meets prior to each formal Board meeting, to discuss pending issues and to set the agenda. It meets between Board meetings as needed to respond to immediate issues and opportunities. Members of the Executive Committee include Executive Director Linda Bowers, Treasurer Gerry Bowers, Secretary Karen Chittick, and Advisory Board member Michal Wert.

### **Finance Committee, Gerry Bowers, chair**

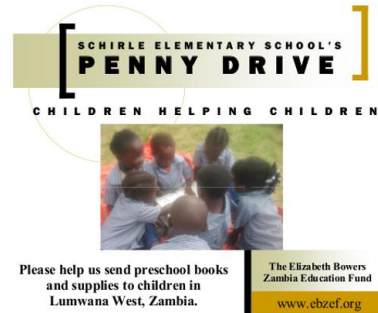
*Purpose: Keep full and accurate accounts of EBZEF financial records, oversee disbursement of funds, and make regular financial reports to the Board of Directors.*

Gerry Bowers continues as EBZEF Treasurer until a new Board member can be identified. The Finance Committee prepares an annual budget based on needs to support and manage the secondary school project and anticipated college/training requests for each year. It provides financial accounting updates at regularly scheduled Board meetings. **Melhorn & Associates** prepares annual taxes for EBZEF and provides regular bookkeeping reports for the Finance Committee to monitor finances.

### **Education Committee, Angela Wanak, chair**

*Purpose: Monitor scholarship recipients in Lumwana West Basic School and in Mwinilunga and Mukenge High Schools, maintain student lists, and prepare annual letters to Beth's Girls from EBZEF. Administer a competitive selection process, develop criteria for college programs, and provide regular reports to the Board of Directors.*

**Schirle Elementary School** is planning for its third Penny Drive to purchase teaching and learning materials and supplies for the Lumwana West preschool. SES parent **Carrie Hare** continues this tradition of children helping children half-way around the world.



The **Zambia Club of South Salem High School**, with President **Zia Habecost**, supports the efforts of EBZEF and continues to learn about education and development in Lumwana West.

### **Grant Committee, Linda Bowers/Karen Chittick, co-chairs**

*Purpose: Identify opportunities and oversee grants and scholarships for EBZEF.*

EBZEF received a \$1,500 grant from the **Salem Rotary Literacy Committee** to purchase business textbooks for the Memorial Library.

The \$20,000 grant received from **Baal Dan Charities** will be carried over to 2017 to complete the 2-room preschool building.

### **Fundraising Committee, Linda Bowers, chair**

*Purpose: Develop and implement a fundraising strategy for the Board and volunteers. Oversee publicity and events for EBZEF.*

The Fundraising Committee met regularly in 2016 to continue EBZEF's efforts to raise funds for the Secondary School Project. Social media consultant Jennifer Bowers supports this special Board committee. A significant effort has been developing the partnership with World Vision to help fundraise and manage this large and complex undertaking. The Committee is also developing videos to share with potential donors and others interested in supporting EBZEF's work.

#### *Fundraising Events*

- EBZEF is connected to several charity networks: **eBay's Giving Works**, **Good Shop** and **Good Search**, **Amazon Smile**, and **Fred Meyer Community Rewards**. The more people sign up with these programs, the more revenue for EBZEF.
- Newsletters continue to be EBZEF's major fund-raising effort. In 2016, two full newsletters were published, in May and December, with a secondary school update published in September.
- EBZEF was featured in an article in the **Statesman Journal** titled "What would your nonprofit do with \$1,000,000?" on February 28.
- In March, Linda and Gerry Bowers met with **WaterAfrica** nonprofit co-founders Bill and Diane Savage to discuss mutual interests and opportunities.
- Board members Linda Bowers and Karen Chittick attended the **Salem Multicultural Institute** potluck and met with the new Director in March.
- In October, **Chikondi Phiri**, Deputy National Director for World Vision and longtime friend of EBZEF, visited with the EBZEF Board and the leaders of the **WaterAfrica**

program to discuss ways the programs can support each other and to reaffirm the WV commitment to the Lumwana West secondary school project.

- Linda and Jennifer Bowers attended a SCORE workshop on email marketing on May 19.
- Linda and Karen attended a Funder's Forum at Willamette University on June 24.
- Linda and Karen attended a LDS church service fair on September 24.
- Linda continues to work with Alan Shiffer to identify and schedule joint EBZEF/WV fund-raising events to support the secondary school program.
- Linda attends the CCI breakfast meetings to learn, share information, and network.



Chikondi Phiri

### **Library Committee, Karen Chittick, chair**

*Purpose: Responsible for oversight of library construction and furnishings, shipment of books, librarian oversight, library programs and policies, and general facility maintenance. Also monitors and supports the preschool program.*

#### *EBZEF Memberships*

- Member of the **Nonprofit Association of Oregon**.
- Member of the **Center for Community Innovation (CCI)**, gaining access to local nonprofit resources, training, and networking.

#### *Subscriptions*

- EBZEF pays for several regular subscriptions for the Memorial Library, including:
  - Three daily newspaper subscriptions
  - National Geographic for Little Kids
- Early childhood materials provided to Lumwana West include:
  - Encyclopedia Britannica computer program
  - Mavis Beacon Teaches Typing
  - Laminated cardboard keyboards to teach typing
  - Additional early childhood education materials provided by the Willamette University School of Education.

#### *Events/Presentations*

- EBZEF again participated in the **Salem Multicultural Institute's World Beat Festival** on June 25-26. It is a good opportunity to visit with donors, old and new friends, and to find new volunteers drawn to our program.
- **Judith Singer's** Elizabeth Bowers rose was formally introduced in American Rose magazine in fall 2016. It was also a "New Introduction" in the Rogue Valley Roses Bulletin in September, where it is available for purchase.
- Beth's Peace Corps group celebrated its 15<sup>th</sup> anniversary from its initial induction into service in 2001.



Angela Wanak & family enjoy the World Beat Festival

### *Informational Materials/Publications*

- The EBZEF website continues to be updated on a regular basis. New and changing information is added to keep the website fresh and interesting.
- Information about the secondary school project continues to be developed and shared with potential donors and supporters.
- EBZEF is active on **Facebook, LinkedIn, and Twitter**, and uses **Volunteer Match** services to contact potential volunteers. All EBZEF supporters are encouraged to comment on and share the EBZEF posts.

### **Technology Committee, Michal Wert, chair**

*Purpose: Investigate opportunities for how technology can improve the quality of life for Lumwana West families.*

EBZEF regularly coordinates with EWB on its projects. It is working with Lumwana West, the MOE, and WV to complete the secondary school project.

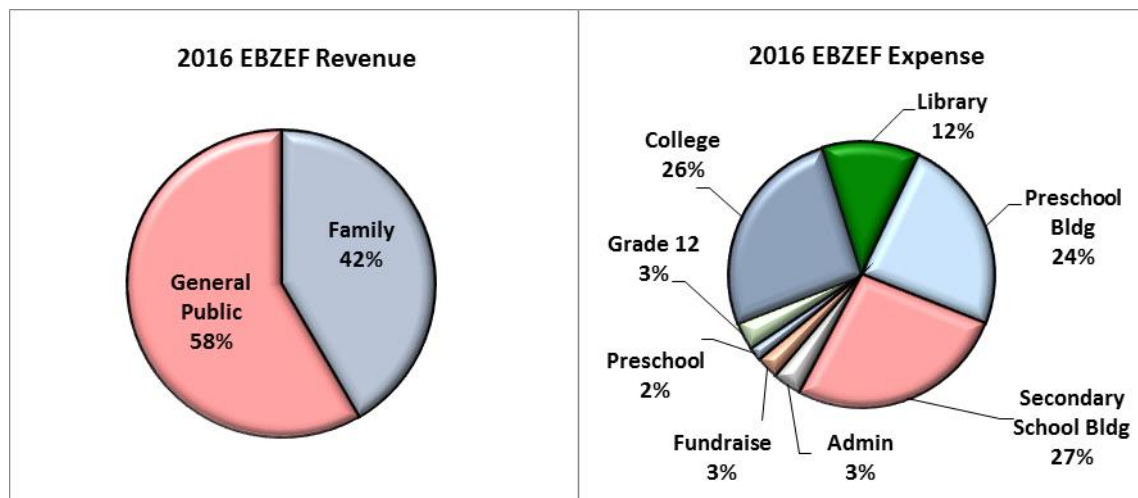
### **Intercultural Advisory Committee, Fordson Kafweku/Dan Irvine, co-chairs**

*Purpose: Advise the EBZEF Board and Committees to ensure sensitivity and suitability of approaches to programs and to the people of Lumwana West and Zambia.*

Dan and Fordson provide valuable insight to help Lumwana West complete its secondary school project, as well as opportunities for international fund-raising.

## **FINANCIAL STATUS**

The following graphs show the portion of the EBZEF budget that was spent on program and non-program areas, and the amount of revenue from family vs. public funding.



EBZEF invests all donations in education and community programs; overhead costs are borne by Beth's family. In 2016, **94 percent of revenues were spent on program-related expenses**. These included supported education, uniforms and supplies for Beth's Girls in



grade 12; preschool materials and teacher salary; college; librarian salary and purchase of textbooks and equipment for the library; and investment in new school facilities. A \$20,000 grant received in 2016, dedicated to the preschool construction program, will be spent in early 2017. Fundraising and administrative costs remain low because of the many volunteers who support these activities.

EBZEF's generous donors provided 55 percent of total revenue, with 45 percent provided by family. A statement of financial activities for 2016 is available upon request.

## **LOOKING FORWARD TO 2017**

### **EDUCATION**

EBZEF's successful secondary school scholarship program ended at the end of 2016, with four Beth's Girls completing Mwinilunga High School. Preschool through grade 12 are now available within Lumwana West, eliminating the significant expense and disruption of attending boarding school for high school. Completion of the secondary school complex, with the MOE assuming responsibility for teacher salaries and operations and maintenance of the buildings, will address extreme overcrowding, and will ensure sustainability of the education program within the village.

All Beth's Girls requesting a scholarship for college or other post-secondary training have been supported, and this program will continue as finances allow. After all Beth's Girls who are interested have completed post-secondary education and training, EBZEF will work with Lumwana West to evaluate additional educational needs for the community.

### **SECONDARY SCHOOL**

With the successful completion of Phase I in 2016, villagers are looking forward to using the new facilities. This includes two 3-room classroom blocks and two teachers' houses. An ablution block, included in Phase II, was also constructed in 2016, since money was available and the contractor was on-site. WV's on-site project management was important to complete Phase I on schedule, on budget, and with quality workmanship. It is anticipated that these buildings will be accepted by the Ministry of Education and will be transferred to the community for use in early 2017.

Phase II kicked off in late 2016 and includes seven more teachers' houses, two 3-classroom blocks, an office block, an ablution block for girls, furniture, and water. The remaining estimated cost for Phase II is \$915,000.

The 3-classroom science and laboratory building being constructed by EWB has a completed foundation and work is continuing to complete it soon.

Together with World Vision, the EBZEF Board will continue to work to raise \$915,000 for the remainder of Phase II, and another \$430,000 to complete the final Phase III. Phase III will include one 3-classroom block, a computer lab with computers, a school hall, and

internet and solar capabilities. With the continued support of partners and donors, EBZEF and villagers are excited to make this entire program a reality.

### **LIBRARY**

Hopefully, 2017 will be the year that the MOE will assume responsibility for Library operations, maintenance, and staffing/salaries. With EBZEF support, Sandra Kamulousu completed her Library Science studies and is prepared to compete for the position of Librarian with the MOE. EBZEF will continue to support Library operations and maintenance until assumed by the MOE.

### **PRESCHOOL**

The 2-classroom preschool building, funded with a grant from Baal Dan Charities, will be completed in early 2017. It will be constructed by the same contractor that built Phase I classroom facilities. EBZEF's focus for 2017 will be to raise money to fund teacher's aides until the program is assumed by the MOE, and for furniture, books, and supplies.

### **FUNDRAISING**

The priority for the EBZEF Board in 2017 will continue to be fundraising for the secondary school and providing oversight for the secondary school project with World Vision. Scholarships for Beth's Girls wishing to pursue post-secondary school education or training will be provided as funding allows.

It is especially gratifying to receive donations from individuals who have supported EBZEF and Beth's memory since the program started in 2003. We greatly appreciate the many generous donations received throughout the year that are the heart of the fund-raising program that supports all current activities.

### **ADMINISTRATION**

EBZEF continues to look for a new Treasurer. It would be ideal to interest someone in the Salem area with a solid financial background.

Working with partners requires substantial effort, but it provides substantial rewards. This will be especially important as EBZEF works with World Vision and the community and to encourage government support to complete the secondary school project in Lumwana West.

For more information on EBZEF and its partners:

Elizabeth Bowers Zambia Education Fund

Website: [www.ebzef.org](http://www.ebzef.org)

Facebook: [www.facebook.com/EBZEF](https://www.facebook.com/EBZEF)

Linked in: [www.linkedin.com/groups/4036740](https://www.linkedin.com/groups/4036740)

Twitter: [www.twitter.com/EBZEF](https://www.twitter.com/EBZEF)

World Vision International - [www.wvi.org](http://www.wvi.org)

Peace Corps - [www.peacecorps.gov](http://www.peacecorps.gov)

Engineers Without Borders Mid-Columbia Chapter - [www.ewb-mid-columbia.org](http://www.ewb-mid-columbia.org)

## ATTACHMENT A

### **EBZEF BOARD OF DIRECTORS**

Linda O. Bowers, President  
Assoc. Prof. of English (retired)  
Willamette University  
Salem, OR

Daniel E. Irvine  
Ops & Resource Dev. Director  
Global Health Center  
World Vision International  
Fort Washington, MD

Gerard F. Bowers, PhD, Treasurer  
Prof. of English (retired)  
Willamette University  
Salem, OR

Fordson Kafweku  
Operations Manager  
World Vision International  
Lusaka, Zambia

Karen Chittick, Secretary  
Assoc. Dir., Academic Administration  
Tokyo Int'l University of America  
Salem, OR

### **ADVISORY BOARD**

Cassandra Farrin  
Marketing Director/Editor  
Westar Institute/Polebridge Press  
Salem, OR

Angela Wanak  
JD/MBA Willamette University  
Salem, OR

Bob Kister  
Non-profit Communications  
Mt. Angel, OR

Michal A. Wert  
Principal, MW Consulting (retired)  
Newberg, OR