

Standard Class ZZ Sets

ECONOMICAL GENERAL PURPOSE PIN GAGES

Make quick and accurate measurements with Vermont Gage Pin Gages. Measure hole sizes. Calculate distances between holes. Gage slot widths. Check locations. Use for Go/NoGo gaging. Size in micrometers and snap gages. These economical gages give you added wear life, unlike closer tolerance gages available on the market today.

- ***Class ZZ (.0002" or .005mm tolerance)***
- ***Go (Plus) or NoGo (Minus)***
- ***Available in Steel or Black Guard™***
- ***NIST traceable***
- ***.0005" or .02mm sizes***
- ***.001" or .02mm set increments***
- ***Tool Steel; 60/65 Rc***
- ***2" long***
- ***10 microinch finish or better***
- ***Round within .0001" or .0025mm***
- ***Marked with size and direction of tolerance on gages over .0605"***
- ***Certificate of Accuracy included***
- ***See pages 108-109 for Calibration Services***



Standard Class ZZ Sets

			Steel		Black Guard™		
Range	No. of Gages	Wt. lbs.	Order No. (Plus) Steel	Order No. (Minus) Steel	Order No. (Plus) Black Guard	Order No. (Minus) Black Guard	Price
Inch Sets (.001 increments)							
.0060" to .0600"	55	2	101100100	101200100	901100100	901200100	\$110.00
.0065" to .0605"	55	2	101300100	101400100	901300100	901400100	\$110.00
.0110" to .0600"	50	2	101100200	101200200	901100200	901200200	\$85.00
.0115" to .0605"	50	2	101300200	101400200	901300200	901400200	\$85.00
.0110" to .2500"	240	6	101100300	101200300	901100300	901200300	\$250.00
.0115" to .2505"	240	6	101300300	101400300	901300300	901400300	\$250.00
.0610" to .2500"	190	6	101100400	101200400	901100400	901200400	\$180.00
.0615" to .2505"	190	6	101300400	101400400	901300400	901400400	\$180.00
.2510" to .5000"	250	20	101100500	101200500	901100500	901200500	\$270.00
.2515" to .5005"	250	20	101300500	101400500	901300500	901400500	\$270.00
.5010" to .6250"	125	21	101100600	101200600	901100600	901200600	\$325.00
.5015" to .6255"	125	21	101300600	101400600	901300600	901400600	\$325.00
.6260" to .7500"	125	31	101100700	101200700	901100700	901200700	\$345.00
.6265" to .7505"	125	31	101300700	101400700	901300700	901400700	\$345.00
.7510" to .8320"	82	27	101100800	101200800	901100800	901200800	\$600.00
.7515" to .8325"	82	27	101300800	101400800	901300800	901400800	\$600.00
.8330" to .9160"	84	33	101100900	101200900	901100900	901200900	\$700.00
.8335" to .9165"	84	33	101300900	101400900	901300900	901400900	\$700.00
.9170" to 1.0000"	84	38	101101000	101201000	901101000	901201000	\$725.00
.9175" to 1.0005"	84	38	101301000	101401000	901301000	901401000	\$725.00
Metric Sets (.02mm increments)							
0.20mm to 1.28mm	55	2	102100100	102200100	902100100	902200100	\$100.00
0.21mm to 1.29mm	55	2	102300100	102400100	902300100	902400100	\$100.00
1.30mm to 4.98mm	185	6	102100200	102200200	902100200	902200200	\$215.00
1.31mm to 4.99mm	185	6	102300200	102400200	902300200	902400200	\$215.00
5.00mm to 9.98mm	250	14	102100300	102200300	902100300	902200300	\$335.00
5.01mm to 9.99mm	250	14	102300300	102400300	902300300	902400300	\$335.00
10.00mm to 13.98mm	200	24	102100400	102200400	902100400	902200400	\$290.00
10.01mm to 13.99mm	200	24	102300400	102400400	902300400	902400400	\$290.00
14.00mm to 16.48mm	125	24	102100500	102200500	902100500	902200500	\$370.00
14.01mm to 16.49mm	125	24	102300500	102400500	902300500	902400500	\$370.00
16.50mm to 18.98mm	125	30	102100600	102200600	902100600	902200600	\$475.00
16.51mm to 18.99mm	125	30	102300600	102400600	902300600	902400600	\$475.00
19.00mm to 20.98mm	100	32	102100700	102200700	902100700	902200700	\$815.00
19.01mm to 20.99mm	100	32	102300700	102400700	902300700	902400700	\$815.00
21.00mm to 22.48mm	75	29	102100800	102200800	902100800	902200800	\$700.00
21.01mm to 22.49mm	75	29	102300800	102400800	902300800	902400800	\$700.00
22.50mm to 23.98mm	75	33	102100900	102200900	902100900	902200900	\$725.00
22.51mm to 23.99mm	75	33	102300900	102400900	902300900	902400900	\$725.00
24.00mm to 25.48mm	75	36	102101000	102201000	902101000	902201000	\$760.00
24.01mm to 25.49mm	75	36	102301000	102401000	902301000	902401000	\$760.00

Vermont Gage offers
Calibration Services
 for new and used sets and libraries.
See Pages 108-109 for details!

Standard Class ZZ Libraries

ECONOMICAL GENERAL PURPOSE PIN GAGES

Make quick and accurate measurements with Vermont Gage Pin Gages. Measure hole sizes. Calculate distances between holes. Gage slot widths. Check locations. Use for Go/NoGo gaging. Size in micrometers and snap gages. These economical gages give you added wear life, unlike closer tolerance gages available on the market today.

- ***Class ZZ (.0002" or .005mm tolerance)***
- ***Go (Plus) or NoGo (Minus)***
- ***Available in Steel or Black Guard™***
- ***NIST traceable***
- ***.0005" or .01mm sizes***
- ***.001" or .02mm set increments***
- ***Tool Steel; 60/65 Rc***
- ***2" long***
- ***10 microinch finish or better***
- ***Round within .0001" or .0025mm***
- ***Marked with size and direction of tolerance on gages over .0605"***
- ***Additional library configurations available upon request***
- ***Certificate of Accuracy included***
- ***See pages 108-109 for Calibration Services***



Standard Class ZZ Libraries

				Steel		Black Guard™		
Range	No. of Gages	Wt. lbs.	No of Drawers	Order No. (Plus) Steel	Order No. (Minus) Steel	Order No. (Plus) Black Guard	Order No. (Minus) Black Guard	Price
Inch Libraries (.001" increments)								
.0060" to .6250"	620	89	4	101101100	101201100	901101100	901201100	\$1,125.00
.0065" to .6255"	620	89	4	101301100	101401100	901301100	901401100	\$1,125.00
.0060" to .8320"	827	187	6	101101150	101201150	901101150	901201150	\$2,125.00
.0065" to .8325"	827	187	6	101301150	101401150	901301150	901401150	\$2,125.00
.0060" to 1.000"	995	256	8	101101200	101201200	901101200	901201200	\$3,600.00
.0065" to 1.0005"	995	256	8	101301200	101401200	901301200	901401200	\$3,600.00
.0110" to .6255" **	1230	202	8	101102150	101202150	901102150	901202150	\$2,065.00
.0110" to .6250"	615	120	4*	101101300	101201300	901101300	901201300	\$1,095.00
.0115" to .6255"	615	120	4*	101301300	101401300	901301300	901401300	\$1,095.00
.0110" to .7500"	740	118	4	101101400	101201400	901101400	901201400	\$1,445.00
.0115" to .7505"	740	118	4	101301400	101401400	901301400	901401400	\$1,445.00
.0110" to .9160"	906	192	6	101101450	101201450	901101450	901201450	\$2,755.00
.0115" to .9165"	906	192	6	101301450	101401450	901301450	901401450	\$2,755.00
.0110" to 1.000"	990	256	8*	101101500	101201500	901101500	901201500	\$3,570.00
.0115" to 1.0005"	990	256	8*	101301500	101401500	901301500	901401500	\$3,570.00
.0610" to .5005" **	880	120	4	101102200	101202200	901102200	901202200	\$1,125.00
.0610" to .7500"	690	118	4	101101600	101201600	901101600	901201600	\$1,345.00
.0615" to .7505"	690	118	4	101301600	101401600	901301600	901401600	\$1,345.00
.0610" to .9160"	856	218	6	101101650	101201650	901101650	901201650	\$2,695.00
.0615" to .9165"	856	218	6	101301650	101401650	901301650	901401650	\$2,695.00
.0610" to 1.000"	940	256	8*	101101700	101201700	901101700	901201700	\$3,475.00
.0615" to 1.0005"	940	256	8*	101301700	101401700	901301700	901401700	\$3,475.00
.5010" to 1.0000"	500	150	6*	101101950	101201950	901101950	901201950	\$2,975.00
.5015" to 1.0005"	500	150	6*	101301950	101401950	901301950	901401950	\$2,975.00
.6260" to 1.0000"	375	129	4	101102000	101202000	901102000	901202000	\$2,600.00
.6265" to 1.0005"	375	129	4	101302000	101402000	901302000	901402000	\$2,600.00
.7510" to 1.0000"	250	98	4*	101102050	101202050	901102050	901202050	\$2,255.00
.7515" to 1.0005"	250	98	4*	101302050	101402050	901302050	901402050	\$2,255.00
Metric Libraries (.02mm increments)								
0.20mm to 13.98mm	690	86	4	102101100	102201100	902101100	902201100	\$1,170.00
0.21mm to 13.99mm	690	86	4	102301100	102401100	902301100	902401100	\$1,170.00
0.20mm to 18.98mm	940	154	6	102101150	102201150	902101150	902201150	\$2,000.00
0.21mm to 18.99mm	940	154	6	102301150	102401150	902301150	902401150	\$2,000.00
0.20mm to 22.48mm	1115	241	8	102101200	102201200	902101200	902201200	\$3,695.00
0.21mm to 22.49mm	1115	241	8	102301200	102401200	902301200	902401200	\$3,695.00
0.20mm to 25.48mm	1265	322	10	102101250	102201250	902101250	902201250	\$5,385.00
0.21mm to 25.49mm	1265	322	10	102301250	102401250	902301250	902401250	\$5,385.00
1.30mm to 16.48mm	760	108	4	102101300	102201300	902101300	902201300	\$1,565.00
1.31mm to 16.49mm	760	108	4	102301300	102401300	902301300	902401300	\$1,565.00
1.30mm to 20.98mm	985	184	6	102101350	102201350	902101350	902201350	\$2,630.00
1.31mm to 20.99mm	985	184	6	102301350	102401350	902301350	902401350	\$2,630.00
1.30mm to 23.98mm	1135	268	8*	102101400	102201400	902101400	902201400	\$4,575.00
1.31mm to 23.99mm	1135	268	8*	102301400	102401400	902301400	902401400	\$4,575.00
1.30mm to 25.48mm	1210	322	10*	102101450	102201450	902101450	902201450	\$5,000.00
1.31mm to 25.49mm	1210	322	10*	102301450	102401450	902301450	902401450	\$5,000.00

*Indicates 1 empty drawer **Indicates .0005 increments

Standard Class ZZ Go/NoGo Assemblies

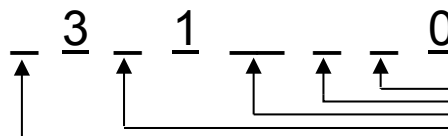
A GREAT GO/NOGO INSPECTION TOOL

Class ZZ assemblies are economical and versatile for Go/NoGo gaging. If the Go (green end) fits and the NoGo (red end) does not, your part passes inspection. It does not get any easier! Each assembly includes 1 line (up to 25 characters) of custom marking.

Range	Single-End Assembly	Double-End Assembly
Inch		
.0040" to .0105"	\$17.75	\$28.50
.0110" to .0755"	\$14.10	\$21.20
.0760" to .1805"	\$13.85	\$20.70
.1810" to .2815"	\$15.35	\$22.20
.2820" to .4065"	\$15.85	\$22.70
.4070" to .5005"	\$18.35	\$25.20
.5010" to .6255"	\$22.50	\$31.50
.6260" to .7505"	\$26.50	\$37.50
.7510" to .8325"	\$34.75	\$48.50
.8330" to .9165"	\$36.25	\$51.50
.9170" to 1.0005"	\$36.50	\$52.00
Metric		
0.20mm to 1.29mm	\$15.00	\$23.00
1.30mm to 4.56mm	\$14.35	\$21.70
4.57mm to 7.14mm	\$15.85	\$23.20
7.15mm to 9.99mm	\$16.35	\$23.70
10.00mm to 12.94mm	\$19.75	\$28.00
12.95mm to 16.12mm	\$23.00	\$33.00
16.13mm to 18.99mm	\$27.50	\$39.00
19.00mm to 19.30mm	\$29.50	\$42.50
19.31mm to 22.49mm	\$36.50	\$52.00
22.50mm to 23.99mm	\$37.50	\$54.00
24.00mm to 25.50mm	\$38.50	\$56.00

Use larger diameter to determine proper range.

How To Order:



Finish

- [1] Steel
- [9] Black Guard™

Scale

- [1] Inch
- [2] Metric

Range

- [01] .0040" to .0105" [0.20mm to 1.29mm]
- [02] .0110" to .0755" [1.30mm to 4.56mm]
- [03] .0760" to .1805" [4.57mm to 7.14mm]
- [04] .1810" to .2815" [7.15mm to 9.99mm]
- [05] .2820" to .4065" [10.00mm to 12.94mm]
- [06] .4070" to .5005" [12.95mm to 16.12mm]
- [07] .5010" to .6255" [16.13mm to 18.99mm]
- [08] .6260" to .7505" [19.00mm to 19.30mm]
- [09] .7510" to .8325" [19.31mm to 22.49mm]
- [10] .8330" to .9165" [22.50mm to 23.99mm]
- [11] .9170" to 1.0005" [24.00mm to 25.50mm]

Direction of Tolerance

- [1] Go [1 member, (plus) unilateral tolerance]
- [2] NoGo [1 member, (minus) unilateral tolerance]
- [3] Go/NoGo [2 members, (1) Plus, (1) Minus tolerance]

Package

- [1] Single-End Assembly
 - [1 member, single-end handle, green cap]
- [2] Single-End Assembly
 - [1 member, single-end handle, red cap]
- [3] Double-End Assembly
 - [2 members, double-end handle, green & red cap]

Size (Specify size of gage members)

When ordering, configure part number and add size of gage members.

Example: 131104330 - Go .248" / NoGo .252"

Handle Marking:

(up to 25 characters included at no charge)



Standard Class X Plug Gages

SIZES UP TO 1"

Use as masters to calibrate measuring equipment or to gage parts directly. Either way, these Class X (+.00004", -.00004" or +.00004", -.00004") Plug Gages provide accurate, cost effective measurement standards perfect for both the shop floor or Metrology Laboratory. Certificate of Accuracy included. Available with Certificate of Calibration traceable to NIST.

- **Class X**
- **Go (Plus) or NoGo (Minus) tolerance .00004" up to .8250" .00006" .8251" to 1.0000"**
- **NIST traceable**
- **Sizes available every .0001" up to 1.0000"**
- **See pages 12-13 for Metric sizes**
- **Tool Steel; 60/65 Rc (Cold Stabilized)**
- **2" long**
- **4 microinch finish or better**
- **Round within 1/2 of tolerance**
- **Certificate of Accuracy included**

How to Order:

14 1 — — 0

Direction of Tolerance

[1] Go (Plus)

[2] NoGo (Minus)

Size (Specify size of gage)

[xxxx]

Examples:

.2500" Plus pin gage = 141125000

.2501" Minus pin gage = 141225010

INCH

Range	Price 1 pc.	Price 2 to 9 pcs.	Price 10 or more pcs.
.0040" to .0250"	\$20.75	\$19.75	\$18.25
.0251" to .0750"	\$17.50	\$16.50	\$15.00
.0751" to .2810"	\$13.50	\$12.50	\$11.00
.2811" to .4060"	\$13.75	\$12.75	\$11.25
.4061" to .5100"	\$14.50	\$13.50	\$12.00
.5101" to .6350"	\$15.75	\$14.75	\$13.25
.6351" to .7600"	\$20.00	\$19.00	\$17.50
.7601" to 1.0000"	\$22.00	\$21.00	\$19.50

Combine identical sizes for best quantity column pricing.



CERTIFICATIONS

Range	Type of Certificate	Order No. New Gages	Price
.0040" to .0100"	Calibration	973011100	\$15.00
	Accredited	973011110	\$25.00
.0101" to 1.000"	Calibration	973011120	\$12.50
	Accredited	973011130	\$22.00

Standard Class X Go/NoGo Assemblies

A GREAT GO/NOGO INSPECTION TOOL

Class X assemblies are economical and versatile for Go/NoGo gaging. If the Go (green end) fits and the NoGo (red end) does not, your part passes inspection. It does not get any easier! Each assembly includes 1 line (up to 25 characters) of custom marking.

INCH

Range	Single-End Assembly	Double-End Assembly
.0040" to .0250"	\$31.50	\$56.00
.0251" to .0750"	\$28.25	\$49.50
.0751" to .1800"	\$24.25	\$41.50
.1801" to .2810"	\$25.75	\$43.00
.2811" to .4060"	\$26.50	\$44.00
.4061" to .5100"	\$29.75	\$48.00
.5101" to .6350"	\$34.25	\$55.00
.6351" to .7600"	\$40.50	\$65.50
.7601" to 1.0000"	\$48.50	\$76.00

Use larger diameter to determine proper range.

How to Order:

15 1 1 — — — 0

Range

- [01] .0040" to .0250"
- [02] .0251" to .0750"
- [03] .0751" to .1800"
- [04] .1801" to .2810"
- [05] .2811" to .4060"
- [06] .4061" to .5100"
- [07] .5101" to .6350"
- [08] .6351" to .7600"
- [09] .7601" to 1.0000"

Direction of Tolerance

- [1] Go [1 member, (plus) unilateral tolerance]
- [2] NoGo [1 member, (minus) unilateral tolerance]
- [3] Go/NoGo [2 members, (1) Plus, (1) Minus tolerance]

Package

- [1] Single-End Assembly
[1 member, single-end handle, green cap]
- [2] Single-End Assembly
[1 member, single-end handle, red cap]
- [3] Double-End Assembly
[2 members, double-end handle, green & red cap]

Size (Specify size of gage members)

When ordering, configure part number and add size of gage members.

Example: 151103330 - Go .1251" / NoGo .1258"

Handle Marking:

(up to 25 characters included at no charge)



Made to Order Custom Sets

CUSTOMIZED CONVENIENCE!

Vermont Gage is proud to introduce our new custom sets to the fixed limit gage market. Vermont Gage Custom Sets provide a compact, organized and convenient way to store your fixed limit gages. Our custom sets will allow you to store any style gage labeled clearly for your most efficient use. Customization and personalization ensure quick identification for use of your most critical gages. High density closed cell foam provides protection and peace of mind knowing that your high tolerance gages are transported safely. In-house fabrication allows for a quick turnaround time. Call for a quote and find out more about our new Vermont Gage Custom Sets.

- ***Be more efficient with Vermont Gage Custom Sets***
- ***Class X over/under sets on demand***
- ***Store your Taperlocks, Trilocks, Rings and Threads***
- ***Closed cell foam, ensures a tight fit and safe travel***
- ***Perfect for reoccurring jobs***
- ***Buy only the gages you need***
- ***Personalize your set with laser markings***
- ***Convenience and precision that meet your needs***
- ***Boxes available in two sizes***
- ***Customize your set for quick access to the gages you need***



Custom Over/Under Sets

NOMINAL DIAMETER INSPECTION

Vermont Gage Over / Under sets are built around one nominal diameter. Twenty-four additional pins are supplied in .0001" increments. Twelve gages above and below the nominal diameter. The Class X tolerance insures a separation between each pin in the range around the nominal diameter. This allows the gage user to more accurately identify where the hole diameter is in relation to the nominal hole size.

- *Be more efficient with Vermont Gage Class X Over/under sets*
- *Stock Class X pins provide a quick turnaround time*
- *Certificates of Calibration and A2LA ISO 17025 Accredited Certificates available*
- *25 pin set in .0001" increments*
- *Available in in both Plus and Minus tolerances*
- *Diameters .0040" to 1.000"*
- *NIST Traceable*
- *Durable plastic box and closed cell foam insert with easy to read markings*

Range	Price
.0040" to .0250"	\$375.00
.0251" to .0750"	\$295.00
.0751" to .2810"	\$220.00
.2811" to .4060"	\$220.00
.4061" to .5100"	\$245.00
.5101" to .6350"	\$270.00
.6351" to .7600"	\$375.00
.7601" to 1.0000"	\$395.00

How to Order:

27 0 — — 000

Direction of Tolerance
 [1] Go (Plus)
 [2] NoGo (Minus)

Range
 [01] .0040" to .0250"
 [02] .0251" to .0750"
 [03] .0751" to .2810"
 [04] .2811" to .4060"
 [05] .4061" to .5100"
 [06] .5101" to .6350"
 [07] .6351" to .7600"
 [08] .7601" to 1.0000"

When ordering:
 Configure part number and add "Nominal" size required.
Example:
 270103000 - Go - .2500"
Note:
 Largest "Nominal" size for series is .9988"
 Smallest "Nominal" size for series is .0052"



Custom Reversibles from .0040" to 1.0100"

REVERSIBLES FOR LONGER GAGE LIFE

When one end becomes worn out of tolerance, you can reverse the gage and use the other end. This significantly increases gage life. Vermont Gage's Reversible Plug Gages feature 2" of actual gaging surface. This is crucial for gaging holes of varying depths. These custom plug gages can be assembled with a handle and marked with your tool number. The single-end and double-end assemblies include 1 line (up to 25 characters) of custom marking. These reversible plug gages are available up to 1" in several class tolerances and materials to meet your unique requirements. If you are looking for standard Class X Gage members, see pages 8-9 for best price and how to order.

- **Class XX, X, Y, Z or ZZ**
- **See page 116 for tolerance specifications**
- **Go, NoGo or Master tolerances**
- **NIST traceable**
- **Tool Steel; 60/65 Rc (Cold Stabilized)**
- **Chrome Plated Tool Steel; 70/72 Rc**
- **2" long**
- **4 microinch finish or better on Class XX or X**
- **Handles custom marked 1 line (up to 25 characters) included, additional text quoted upon request**
- **Inch handles – light blue**
- **Metric handles – yellow**
- **Certificate of Accuracy included**
- **See page 111 for Calibration Services**

How to Order:

16 0

Material

- [1] Tool Steel
- [2] Chrome Plated Tool Steel
- [4] Black Guard™

Tolerance

- [1] Class XX
- [2] Class X
- [3] Class Y
- [4] Class Z
- [5] Class ZZ

Range

- | | |
|------------------------|------------------------|
| [01] .0040" to .0150" | [0.101mm to 0.381mm] |
| [02] .0151" to .0300" | [0.382mm to 0.762mm] |
| [03] .0301" to .0750" | [0.763mm to 1.905mm] |
| [04] .0751" to .1800" | [1.906mm to 4.572mm] |
| [05] .1801" to .2810" | [4.573mm to 7.137mm] |
| [06] .2811" to .4060" | [7.138mm to 10.312mm] |
| [07] .4061" to .5100" | [10.313mm to 12.954mm] |
| [08] .5101" to .6350" | [12.955mm to 16.129mm] |
| [09] .6351" to .7600" | [16.130mm to 19.304mm] |
| [10] .7601" to 1.0100" | [19.305mm to 25.654mm] |

Direction of Tolerance

- [1] Go [1 member, (Plus) unilateral tolerance]
- [2] NoGo [1 member, (Minus) unilateral tolerance]
- [3] Master [1 member, bilateral tolerance]
- [4] Go/NoGo [2 members, (1) Plus, (1) Minus tolerance]

Package

- [1] Member Only
- [2] Single-End Assembly
[1 member, single-end handle, green cap]
- [3] Single-End Assembly
[1 member, single-end handle, red cap]
- [4] Double-End Assembly
[2 members, double-end handle, green & red cap]

Size (Specify size of gage members)

Configure part number and add size of gage members.
Example: 161205440 - Go .2480"/NoGo .2520"

Handle Marking:

(up to 25 characters included at no charge)

Custom Reversibles from .0040" to 1.0100"

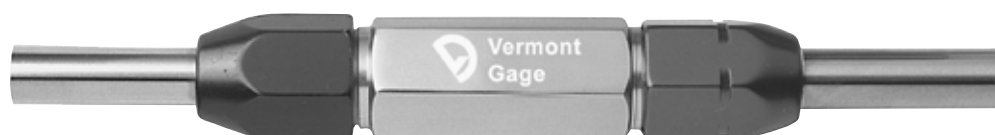
Range	Tolerance Class	Steel			Chrome			Tolerance Class	Black Guard™		
		Price Member Only	Price Single-End Assembly	Price Double-End Assembly	Price Member Only	Price Single-End Assembly	Price Double-End Assembly		Price Member Only	Price Single-End Assembly	Price Double-End Assembly
.0040" to .0150" 0.101mm to 0.381mm [01]	XX	\$70.00	\$80.75	\$154.50				Z ZZ	\$32.00 \$26.00	\$42.75 \$36.75	\$78.50 \$66.50
	X	\$47.00	\$57.75	\$108.50							
	Y	\$35.00	\$45.75	\$84.50							
	Z,ZZ	\$22.00	\$32.75	\$58.50							
.0151" to .0300" 0.382mm to 0.762mm [02]	XX	\$48.00	\$58.75	\$110.50				Z ZZ	\$24.00 \$22.00	\$34.75 \$32.75	\$62.50 \$58.50
	X	\$31.00	\$41.75	\$76.50							
	Y	\$24.00	\$34.75	\$62.50							
	Z,ZZ	\$19.00	\$29.75	\$52.50							
.0301" to .0750" 0.763mm to 1.905mm [03] (Chrome available over .040")	XX	\$30.00	\$40.75	\$74.50	\$45.00	\$55.75	\$104.50	Z ZZ	\$17.00 \$15.00	\$27.75 \$25.75	\$48.50 \$44.50
	X	\$20.00	\$30.75	\$54.50	\$30.00	\$40.75	\$74.50				
	Y	\$15.00	\$25.75	\$44.50	\$25.00	\$35.75	\$64.50				
	Z,ZZ	\$13.00	\$23.75	\$40.50	\$22.00	\$32.75	\$58.50				
.0751" to .1800" 1.906mm to 4.572mm [04]	XX	\$32.00	\$42.75	\$78.50	\$48.00	\$58.75	\$110.50	Z ZZ	\$16.00 \$14.00	\$26.75 \$24.75	\$46.50 \$42.50
	X	\$21.00	\$31.75	\$56.50	\$31.50	\$42.25	\$77.50				
	Y	\$15.00	\$25.75	\$44.50	\$28.00	\$38.75	\$70.50				
	Z,ZZ	\$12.00	\$22.75	\$38.50	\$22.00	\$32.75	\$58.50				
.1801" to .2810" 4.573mm to 7.137mm [05]	XX	\$34.00	\$46.25	\$84.00	\$51.00	\$63.25	\$118.00	Z ZZ	\$16.00 \$14.00	\$28.25 \$26.25	\$48.00 \$44.00
	X	\$24.00	\$36.25	\$64.00	\$36.00	\$48.25	\$88.00				
	Y	\$19.00	\$31.25	\$54.00	\$29.00	\$41.25	\$74.00				
	Z,ZZ	\$12.00	\$24.25	\$40.00	\$23.00	\$35.25	\$62.00				
.2811" to .4060" 7.138mm to 10.312mm [06]	XX	\$35.00	\$47.75	\$86.50	\$52.50	\$65.25	\$121.50	Z ZZ	\$16.00 \$14.00	\$28.75 \$26.75	\$48.50 \$44.50
	X	\$25.00	\$37.75	\$66.50	\$37.50	\$50.25	\$91.50				
	Y	\$20.00	\$32.75	\$56.50	\$31.00	\$43.75	\$78.50				
	Z,ZZ	\$12.00	\$24.75	\$40.50	\$24.00	\$36.75	\$64.50				
.4061" to .5100" 10.313mm to 12.954mm [07]	XX	\$36.00	\$51.25	\$91.00	\$54.00	\$69.25	\$127.00	Z ZZ	\$17.00 \$15.00	\$32.25 \$30.25	\$53.00 \$49.00
	X	\$27.00	\$42.25	\$73.00	\$40.50	\$55.75	\$100.00				
	Y	\$20.00	\$35.25	\$59.00	\$32.00	\$47.25	\$83.00				
	Z,ZZ	\$13.00	\$28.25	\$45.00	\$25.00	\$40.25	\$69.00				
.5101" to .6350" 12.955mm to 16.129mm [08]	XX	\$39.00	\$57.50	\$101.50	\$58.50	\$77.00	\$140.50	Z ZZ	\$18.00 \$16.00	\$36.50 \$34.50	\$59.50 \$55.50
	X	\$29.00	\$47.50	\$81.50	\$43.50	\$62.00	\$110.50				
	Y	\$24.00	\$42.50	\$71.50	\$36.00	\$54.50	\$95.50				
	Z,ZZ	\$14.00	\$32.50	\$51.50	\$26.00	\$44.50	\$75.50				
.6351" to .7600" 16.130mm to 19.304mm [09]	XX	\$41.00	\$61.50	\$107.50	\$61.50	\$82.00	\$148.50	Z ZZ	\$22.00 \$19.00	\$42.50 \$39.50	\$69.50 \$63.50
	X	\$31.00	\$51.50	\$87.50	\$46.50	\$65.50	\$115.50				
	Y	\$25.00	\$45.50	\$75.50	\$37.50	\$56.50	\$97.50				
	Z,ZZ	\$17.00	\$37.50	\$59.50	\$30.00	\$50.50	\$85.50				
.7601" to 1.0100" 19.305mm to 25.654mm [10]	XX	\$63.00	\$89.50	\$158.00	\$94.50	\$121.00	\$221.00	Z ZZ	\$23.00 \$21.00	\$49.50 \$47.50	\$78.00 \$74.00
	X	\$40.00	\$66.50	\$112.00	\$63.00	\$89.50	\$158.00				
	Y	\$31.00	\$57.50	\$94.00	\$57.00	\$83.50	\$146.00				
	Z,ZZ	\$19.00	\$45.50	\$70.00	\$51.00	\$77.50	\$134.00				

QTY DISCOUNTS

2 pcs. & Up... Less 10%

Combine identical sizes
for quantity discount

(Excludes Class XX products)



Carbide Custom Reversibles from .0300" to 1.0000"

REVERSIBLES FOR LONGER GAGE LIFE

When inspecting abrasive materials or a high volume of parts, consider using Vermont Gage carbide plug gages. The harder material increases the gage life in high wear applications. Carbide reversible plug gages may be assembled with a handle and marked with your tool number. Carbide reversible plug gages are available up to 1" in several tolerance classes to meet your unique high wear applications.

- **Class XX, X, Y, Z or ZZ**
- **See page 116 for tolerance specifications**
- **Go, NoGo or Master tolerances**
- **NIST traceable**
- **Tungsten Carbide 90/92 Ra**
- **2" long**
- **4 microinch finish or better on Class XX or X**
- **Handles custom marked 1 line (up to 25 characters) included, additional text quoted upon request**
- **Inch handles – light blue**
- **Metric handles – yellow**
- **Certificate of Accuracy included**
- **See page 111 for Calibration Services**

How to Order:

16

0

Material

[3] Tungsten Carbide

Tolerance

[1] Class XX
[2] Class X
[3] Class Y
[4] Class Z
[5] Class ZZ

Range

[01] .0300" to .0750"	[0.762mm to 1.905mm]
[02] .0751" to .1300"	[1.906mm to 3.302mm]
[03] .1301" to .1800"	[3.303mm to 4.572mm]
[04] .1801" to .2300"	[4.573mm to 5.842mm]
[05] .2301" to .2810"	[5.843mm to 7.137mm]
[06] .2811" to .3430"	[7.138mm to 8.712mm]
[07] .3431" to .4060"	[8.713mm to 10.312mm]
[08] .4061" to .4590"	[10.313mm to 11.658mm]
[09] .4591" to .5100"	[11.659mm to 12.954mm]
[10] .5101" to .5720"	[12.955mm to 14.528mm]
[11] .5721" to .6350"	[14.529mm to 16.129mm]
[12] .6351" to .6970"	[16.130mm to 17.703mm]
[13] .6971" to .7600"	[17.704mm to 19.304mm]
[14] .7601" to .9170"	[19.305mm to 23.291mm]
[15] .9171" to 1.0000"	[23.292mm to 25.400mm]

Direction of Tolerance

[1] Go [1 member, (Plus) unilateral tolerance]
[2] NoGo [1 member, (Minus) unilateral tolerance]
[3] Master [1 member, bilateral tolerance]
[4] Go/NoGo [2 members, (1) Plus, (1) Minus tolerance]

Package

[1] Member Only
[2] Single-End Assembly
 [1 member, single-end handle, green cap]
[3] Single-End Assembly
 [1 member, single-end handle, red cap]
[4] Double-End Assembly
 [2 members, double-end handle, green & red cap]

Size (Specify size of gage members)

Configure part number and add size of gage members.

Example: **163205440 - Go .2480"/NoGo .2520"**

Handle Marking:

(up to 25 characters included at no charge)

Carbide Custom Reversibles from .0300" to 1.0000"

Range	Tolerance Class	Price Member Only	Price Single-End Assembly	Price Double-End Assembly
.0300" to .0750" 0.762mm to 1.905mm [01]	XX	\$66.00	\$76.75	\$146.50
	X	\$60.00	\$70.75	\$134.50
	Y	\$55.00	\$65.75	\$124.50
	Z, ZZ	\$52.00	\$62.75	\$118.50
.0751" to .1300" 1.906mm to 3.302mm [02]	XX	\$63.00	\$73.75	\$140.50
	X	\$55.00	\$65.75	\$124.50
	Y	\$52.00	\$62.75	\$118.50
	Z, ZZ	\$50.00	\$60.75	\$114.50
.1301" to .1800" 3.303mm to 4.572mm [03]	XX	\$65.00	\$75.75	\$147.00
	X	\$57.00	\$67.75	\$131.00
	Y	\$53.00	\$63.75	\$123.00
	Z, ZZ	\$51.00	\$61.75	\$119.00
.1801" to .2300" 4.573mm to 5.842mm [04]	XX	\$67.00	\$79.25	\$150.00
	X	\$58.00	\$70.25	\$132.00
	Y	\$55.00	\$67.25	\$126.00
	Z, ZZ	\$52.00	\$64.25	\$120.00
.2301" to .2810" 5.843mm to 7.137mm [05]	XX	\$73.00	\$85.25	\$162.00
	X	\$63.00	\$75.25	\$142.00
	Y	\$60.00	\$72.25	\$136.00
	Z, ZZ	\$58.00	\$70.25	\$132.00
.2811" to .3430" 7.138mm to 8.712mm [06]	XX	\$78.00	\$90.75	\$172.50
	X	\$66.00	\$78.75	\$148.50
	Y	\$62.00	\$74.75	\$140.50
	Z, ZZ	\$60.00	\$72.75	\$136.50

QTY DISCOUNTS

2 pcs. & Up... Less 10%

Combine identical sizes
for quantity discount

(Excludes Class XX products)

Range	Tolerance Class	Price Member Only	Price Single-End Assembly	Price Double-End Assembly
.3431" to .4060" 8.713mm to 10.312mm [07]	XX	\$86.00	\$98.75	\$188.50
	X	\$77.00	\$89.75	\$170.50
	Y	\$71.00	\$83.75	\$158.50
	Z, ZZ	\$67.00	\$79.75	\$150.50
.4061" to .4590" 10.313mm to 11.658mm [08]	XX	\$93.00	\$108.25	\$205.00
	X	\$81.00	\$96.25	\$181.00
	Y	\$78.00	\$93.25	\$175.00
	Z, ZZ	\$74.00	\$89.25	\$167.00
.4591" to .5100" 11.659mm to 12.954mm [09]	XX	\$100.00	\$115.25	\$219.00
	X	\$92.00	\$107.25	\$203.00
	Y	\$85.00	\$100.25	\$189.00
	Z, ZZ	\$80.00	\$95.25	\$179.00
.5101" to .5720" 12.955mm to 14.528mm [10]	XX	\$125.00	\$143.50	\$273.50
	X	\$110.00	\$128.50	\$243.50
	Y	\$103.00	\$121.50	\$229.50
	Z, ZZ	\$98.00	\$116.50	\$219.50
.5721" to .6350" 14.529mm to 16.129mm [11]	XX	\$160.00	\$178.50	\$343.50
	X	\$145.00	\$163.50	\$313.50
	Y	\$138.00	\$156.50	\$299.50
	Z, ZZ	\$133.00	\$151.50	\$289.50
.6351" to .6970" 16.130mm to 17.703mm [12]	XX	\$175.00	\$195.50	\$375.50
	X	\$160.00	\$180.50	\$345.50
	Y	\$145.00	\$165.50	\$315.50
	Z, ZZ	\$140.00	\$160.50	\$305.50
.6971" to .7600" 17.704mm to 19.304mm [13]	XX	\$200.00	\$220.50	\$425.50
	X	\$185.00	\$205.50	\$395.50
	Y	\$173.00	\$193.50	\$371.50
	Z, ZZ	\$160.00	\$180.50	\$345.50
.7601" to .9170" 19.305mm to 23.291mm [14]	XX	\$235.00	\$261.50	\$502.00
	X	\$220.00	\$246.50	\$472.00
	Y	\$200.00	\$226.50	\$432.00
	Z, ZZ	\$180.00	\$206.50	\$392.00
.9171" to 1.0000" 23.292mm to 25.400mm [15]	XX	\$265.00	\$291.50	\$562.00
	X	\$250.00	\$276.50	\$532.00
	Y	\$230.00	\$256.50	\$492.00
	Z, ZZ	\$210.00	\$236.50	\$452.00



Custom Economy Step Gages/Check Gages

CHECK GO & NOGO TOLERANCE SIMULTANEOUSLY

Step Plug Gages have two gaging diameters to allow checking of Go and NoGo tolerances simultaneously or for checking stepped ID's.

- **Class ZZ (.0002" or .005mm) or Class Z (.0001" or .0025mm)**
- **NIST traceable**
- **52100 Tool Steel; 60/65 Rc**
- **2" OAL members**
- **10 microinch finish or better**
- **Round within 1/2 of tolerance**
- **Custom Markings, 1 line (up to 25 characters) included, additional text quoted upon request**
- **Inch handles – light blue**
- **Metric handles – yellow**
- **Other classes available, refer to Progressive design on pages 24-25**
- **Certificate of Accuracy included**
- **See page 111 for Calibration Services**

How To Order:

2 0

Finish

- [1] Tool Steel
- [9] Black Guard™

Scale

- [1] Inch
- [2] Metric

Tolerance

- [1] Class Z
- [2] Class ZZ

Range

- | | |
|------------------------|----------------------|
| [01] .0610" to .0750" | [1.54mm to 1.90mm] |
| [02] .0751" to .1800" | [1.91mm to 4.56mm] |
| [03] .1801" to .2810" | [4.57mm to 7.14mm] |
| [04] .2811" to .4060" | [7.15mm to 10.30mm] |
| [05] .4061" to .5100" | [10.31mm to 12.94mm] |
| [06] .5101" to .6350" | [12.95mm to 16.12mm] |
| [07] .6351" to .7600" | [16.13mm to 19.30mm] |
| [08] .7601" to .8320" | [19.31mm to 21.13mm] |
| [09] .8321" to 1.0050" | [21.14mm to 25.52mm] |

Direction of Tolerance

- [1] Pin diameter Minus, Step diameter Plus
- [2] Pin diameter Minus, Step diameter Minus
- [3] Pin diameter Plus, Step diameter Plus
- [4] Pin diameter Plus, Step diameter Minus

Package

- [1] Member Only
- [2] Single-End Assembly
 - [1 member, single-end handle, green cap]
- [3] Single-End Assembly
 - [1 member, single-end handle, red cap]

Size (Specify size of gage members)

When ordering, configure part number and add size of gage members.

Example: 121202110 - Pin .1750"/Step .1680"

Handle Marking:

(up to 25 characters included at no charge)

Custom Economy Step Gages/Check Gages

Range	Tolerance Class	Max Step	Step Length	Steel		Black Guard™	
				Price Member	Price Single-End Assembly	Price Member	Price Single-End Assembly
.0610" to .0750" 1.54mm to 1.90mm [01]	Z	.030	1/2"	\$75.00	\$85.75	\$80.00	\$90.75
	ZZ	.030	1/2"	\$44.00	\$54.75	\$50.00	\$60.75
.0751" to .1800" 1.91mm to 4.56mm [02]	Z	.050	1/2"	\$75.00	\$85.75	\$80.00	\$90.75
	ZZ	.050	1/2"	\$44.00	\$54.75	\$50.00	\$60.75
.1801" to .2810" 4.57mm to 7.14mm [03]	Z	.100	1/2"	\$76.00	\$88.25	\$83.00	\$95.25
	ZZ	.100	1/2"	\$45.00	\$57.25	\$51.00	\$63.25
.2811" to .4060" 7.15mm to 10.30mm [04]	Z	.100	3/4"	\$76.00	\$88.75	\$83.00	\$95.75
	ZZ	.100	3/4"	\$45.00	\$57.75	\$51.00	\$63.75
.4061" to .5100" 10.31mm to 12.94mm [05]	Z	.100	3/4"	\$77.00	\$92.25	\$84.00	\$99.25
	ZZ	.100	3/4"	\$49.00	\$64.25	\$54.00	\$69.25
.5101" to .6350" 12.95mm to 16.12mm [06]	Z	.150	3/4"	\$80.00	\$98.50	\$88.00	\$106.50
	ZZ	.150	3/4"	\$61.00	\$79.50	\$67.00	\$85.50
.6351" to .7600" 16.13mm to 19.30mm [07]	Z	.150	1"	\$83.00	\$103.50	\$91.00	\$111.50
	ZZ	.150	1"	\$61.00	\$81.50	\$67.00	\$87.50
.7601" to .8320" 19.31mm to 21.20mm [08]	Z	.150	1"	\$83.00	\$109.50	\$91.00	\$117.50
	ZZ	.150	1"	\$61.00	\$87.50	\$67.00	\$93.50
.8321" to 1.0050" 21.21mm to 25.52mm [09]	Z	.150	1"	\$90.00	\$116.50	\$98.00	\$124.50
	ZZ	.150	1"	\$74.00	\$100.50	\$80.00	\$106.50



Custom Long Length Reversibles up to 12" Long

UP TO 12" LONG

Reversible Plug Gages can be furnished in lengths up to 12" long. With the same specifications as our standard 2" gages (excluding straightness), these long members are perfect for gaging deep, hard-to-reach holes, slots and other dimensions.

- **Class XX, X, Y, Z or ZZ**
- **See page 116 for tolerance specifications**
- **Go, NoGo or Master tolerances**
- **NIST traceable**
- **Tool Steel; 60/65 Rc (Cold Stabilized)**
- **Chrome Plated Tool Steel; 70/72 Rc**
- **Up to 12" long (Class ZZ only)**
- **4 microinch finish or better on Class XX or X**
- **Depth Notches available – see page 115**
- **Certificate of Accuracy included**
- **See page 111 for Calibration Services**

How to Order:

17

0

Material

- [1] Tool Steel
- [2] Chrome Plated Tool Steel
- [4] Black Guard™

Tolerance

- [1] Class XX
- [2] Class X
- [3] Class Y
- [4] Class Z
- [5] Class ZZ

Range

- | | |
|------------------------|------------------------|
| [02] .0151" to .0300" | [0.382mm to 0.762mm] |
| [03] .0301" to .0750" | [0.763mm to 1.905mm] |
| [04] .0751" to .1800" | [1.906mm to 4.572mm] |
| [05] .1801" to .2810" | [4.573mm to 7.137mm] |
| [06] .2811" to .4060" | [7.138mm to 10.312mm] |
| [07] .4061" to .5100" | [10.313mm to 12.954mm] |
| [08] .5101" to .6350" | [12.955mm to 16.129mm] |
| [09] .6351" to .7600" | [16.130mm to 19.304mm] |
| [10] .7601" to 1.0100" | [19.305mm to 25.654mm] |

Direction of Tolerance

- [1] Go [1 member, (Plus) unilateral tolerance]
- [2] NoGo [1 member, (Minus) unilateral tolerance]
- [3] Master [1 member, bilateral tolerance]

Length

- [1] up to 3"
- [2] up to 4"
- [3] up to 5"
- [4] up to 6"
- [5] up to 9"
- [6] up to 12"

Size (Specify size of gage members)

Configure part number and add size and length of gage member.

Example: 171205140 - .2520" x 5.50"



Custom Long Length Reversibles up to 12" Long

		Steel						Black Guard™			
Range	Tolerance Class	Price up to 3"	Price up to 4"	Price up to 5"	Price up to 6"	Price up to 9"	Price up to 12"	Price up to 3"	Price up to 4"	Price up to 5"	Price up to 6"
.0151" to .0300" .382mm to .762mm (Chrome not available) [02]	XX	\$185.00	\$245.00								
	X	\$120.00	\$163.00								
	Y	\$95.00	\$125.00	\$170.00	\$300.00			\$115.00	\$138.00	\$185.00	\$355.00
	Z	\$85.00	\$108.00	\$145.00	\$285.00			\$55.00	\$70.00	\$86.00	\$99.00
	ZZ	\$45.00	\$60.00	\$72.00	\$85.00	\$95.00	\$107.00				
.0301" to .0750" .763mm to 1.905mm (Chrome not available) [03]	XX	\$98.00	\$132.00								
	X	\$68.00	\$90.00	\$165.00	\$220.00						
	Y	\$62.00	\$78.00	\$143.00	\$192.00			\$72.00	\$90.00	\$140.00	\$160.00
	Z	\$52.00	\$66.00	\$104.00	\$120.00			\$50.00	\$64.00	\$78.00	\$90.00
	ZZ	\$40.00	\$44.00	\$56.00	\$60.00	\$70.00	\$80.00				
.0751" to .1800" 1.906mm to 4.572mm (Chrome available to 6") [04]	XX	\$98.00	\$132.00								
	X	\$68.00	\$90.00	\$110.00	\$126.00						
	Y	\$62.00	\$78.00	\$95.00	\$115.00			\$72.00	\$90.00	\$125.00	\$140.00
	Z	\$52.00	\$66.00	\$82.00	\$102.00			\$50.00	\$64.00	\$76.00	\$82.00
	ZZ	\$40.00	\$44.00	\$54.00	\$62.00	\$66.00	\$72.00				
.1801" to .2810" 4.573mm to 7.137mm (Chrome available to 6") [05]	XX	\$98.00	\$132.00								
	X	\$68.00	\$90.00	\$110.00	\$126.00						
	Y	\$62.00	\$78.00	\$95.00	\$115.00			\$72.00	\$96.00	\$125.00	\$135.00
	Z	\$52.00	\$66.00	\$82.00	\$100.00			\$50.00	\$70.00	\$76.00	\$78.00
	ZZ	\$40.00	\$44.00	\$60.00	\$66.00	\$72.00	\$78.00				
.2811" to .4060" 7.138mm to 10.312mm (Chrome available to 6") [06]	XX	\$98.00	\$132.00	\$160.00	\$182.00						
	X	\$68.00	\$90.00	\$110.00	\$128.00						
	Y	\$62.00	\$78.00	\$95.00	\$115.00			\$72.00	\$96.00	\$125.00	\$140.00
	Z	\$52.00	\$66.00	\$82.00	\$100.00			\$50.00	\$70.00	\$76.00	\$80.00
	ZZ	\$40.00	\$44.00	\$60.00	\$66.00	\$72.00	\$78.00				
.4061" to .5100" 10.313mm to 12.954mm (Chrome available to 6") [07]	XX	\$98.00	\$125.00	\$165.00	\$195.00						
	X	\$68.00	\$96.00	\$116.00	\$135.00						
	Y	\$62.00	\$84.00	\$100.00	\$120.00			\$72.00	\$96.00	\$132.00	\$147.00
	Z	\$52.00	\$66.00	\$86.00	\$106.00			\$55.00	\$75.00	\$85.00	\$90.00
	ZZ	\$46.00	\$50.00	\$60.00	\$66.00	\$72.00	\$84.00				
.5101" to .6350" 12.955mm to 16.129mm (Chrome available to 6") [08]	XX	\$98.00	\$125.00	\$170.00	\$200.00						
	X	\$68.00	\$96.00	\$120.00	\$145.00						
	Y	\$62.00	\$84.00	\$105.00	\$125.00			\$72.00	\$96.00	\$140.00	\$155.00
	Z	\$52.00	\$66.00	\$90.00	\$112.00			\$55.00	\$75.00	\$95.00	\$100.00
	ZZ	\$46.00	\$50.00	\$62.00	\$70.00	\$78.00	\$88.00				
.6351" to .7600" 16.130mm to 19.304mm (Chrome available to 6") [09]	XX	\$98.00	\$130.00	\$175.00	\$205.00						
	X	\$68.00	\$100.00	\$125.00	\$150.00						
	Y	\$62.00	\$90.00	\$110.00	\$125.00			\$75.00	\$100.00	\$140.00	\$155.00
	Z	\$52.00	\$75.00	\$100.00	\$116.00			\$60.00	\$80.00	\$95.00	\$100.00
	ZZ	\$46.00	\$60.00	\$72.00	\$80.00	\$94.00	\$105.00				
.7601" to 1.0100" 19.305mm to 25.654mm (Chrome available to 6") [10]	XX	\$165.00	\$205.00	\$295.00	\$395.00						
	X	\$112.00	\$135.00	\$195.00	\$270.00						
	Y	\$105.00	\$125.00	\$180.00	\$250.00			\$135.00	\$170.00	\$250.00	\$325.00
	Z	\$98.00	\$120.00	\$170.00	\$230.00			\$88.00	\$100.00	\$115.00	\$135.00
	ZZ	\$72.00	\$78.00	\$90.00	\$105.00	\$125.00	\$145.00				

Chrome Plated Tool Steel - Add 50% to Steel price.

Carbide available upon request.

Custom Taperlocks from .1501" to 1.5100"

CHANGE GAGE MEMBERS QUICKLY

When you need to gage larger diameters or need to change or replace gage members often, Taperlock Plug Gages are your perfect choice. To change gage members, simply pop-out existing members and press fit new members in your taperlock handle. Each taperlock handle size covers a wide range of gage sizes. Custom plug gage assemblies can be marked with your tool number. Taperlock Gage assemblies include 1 line (up to 25 characters) of custom marking. These Taperlock Plug Gages are available up to 1.5100" in all classes tolerances to meet your unique requirements.

- **Class XX, X, Y, Z or ZZ**
- **See page 116 for tolerance specifications**
- **Go, NoGo tolerances**
- **NIST traceable**
- **Tool Steel; 60/65 Rc (Cold Stabilized)**
- **Chrome Plated Tool Steel; 70/72 Rc**
- **4 microinch finish or better on Class XX or X**
- **Handles custom marked 1 line (up to 25 characters) included, additional text quoted upon request**
- **Inch handles – light blue**
- **Metric handles – yellow**
- **Certificate of Accuracy included**
- **See page 111 for Calibration Services**

How to Order:

18

0

Material

- [1] Tool Steel
- [2] Chrome Plated Tool Steel
- [4] Black Guard™

Tolerance

- [1] Class XX
- [2] Class X
- [3] Class Y
- [4] Class Z
- [5] Class ZZ

Range

- [02] .1501" to .2300" [3.82mm to 5.84mm]
- [03] .2301" to .3650" [5.85mm to 9.27mm]
- [04] .3651" to .5100" [9.28mm to 12.95mm]
- [05] .5101" to .8250" [12.96mm to 20.95mm]
- [06] .8251" to 1.1350" [20.96mm to 28.83mm]
- [07] 1.1351" to 1.5100" [28.84mm to 38.35mm]

Direction of Tolerance

- [1] Go [1 member, (Plus) unilateral tolerance]
- [2] NoGo [1 member, (Minus) unilateral tolerance]
- [3] Go/NoGo [2 members, (1) Plus, (1) Minus tolerance]
- [4] Go Assembly [1 member, Plus unilateral tolerance]
- [5] NoGo Assembly [1 member, Minus unilateral tolerance]

Package

- [1] Member only
- [2] Gage Assembly [Gage(s) with Handle]

Size (Specify size of gage members)

Configure part number and add size of gage member.

Example: **181206320 - Go.9980"/NoGo 1.0000"**

Handle Marking:

(up to 25 characters included at no charge)



Custom Taperlocks from .1501" to 1.5100"

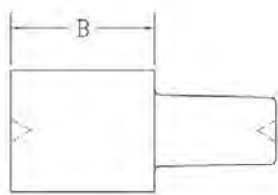
Range	Tolerance Class	Steel					Black Guard™				
		Price Go Member	Price Go Assembly	Price NoGo Member	Price NoGo Assembly	Price Go/NoGo Assembly	Price Go Member	Price Go Assembly	Price NoGo Member	Price NoGo Assembly	Price Go/NoGo Assembly
.1501" to .2300" 3.82mm to 5.84mm [02]	XX	\$65.00	\$77.00	\$62.00	\$74.00	\$139.00					
	X	\$50.00	\$62.00	\$49.00	\$61.00	\$111.00					
	Y	\$46.00	\$58.00	\$45.00	\$57.00	\$103.00					
	Z	\$43.00	\$55.00	\$42.00	\$54.00	\$97.00	\$60.00	\$72.00	\$58.00	\$70.00	\$130.00
	ZZ	\$43.00	\$55.00	\$42.00	\$54.00	\$97.00	\$53.00	\$65.00	\$50.00	\$62.00	\$115.00
.2301" to .3650" 5.85mm to 9.27mm [03]	XX	\$65.00	\$77.00	\$62.00	\$74.00	\$139.00					
	X	\$50.00	\$62.00	\$49.00	\$61.00	\$111.00					
	Y	\$46.00	\$58.00	\$45.00	\$57.00	\$103.00					
	Z	\$43.00	\$55.00	\$42.00	\$54.00	\$97.00	\$60.00	\$72.00	\$58.00	\$70.00	\$130.00
	ZZ	\$43.00	\$55.00	\$42.00	\$54.00	\$97.00	\$53.00	\$65.00	\$50.00	\$62.00	\$115.00
.3651" to .5100" 9.28mm to 12.95mm [04]	XX	\$65.00	\$77.00	\$62.00	\$74.00	\$139.00					
	X	\$50.00	\$62.00	\$49.00	\$61.00	\$111.00					
	Y	\$46.00	\$58.00	\$45.00	\$57.00	\$103.00					
	Z	\$43.00	\$55.00	\$42.00	\$54.00	\$97.00	\$61.00	\$73.00	\$60.00	\$72.00	\$133.00
	ZZ	\$43.00	\$55.00	\$42.00	\$54.00	\$97.00	\$54.00	\$66.00	\$53.00	\$65.00	\$119.00
.5101" to .8250" 12.96mm to 20.95mm [05]	XX	\$68.00	\$80.00	\$67.00	\$79.00	\$147.00					
	X	\$55.00	\$67.00	\$54.00	\$66.00	\$121.00					
	Y	\$49.00	\$61.00	\$48.00	\$60.00	\$109.00					
	Z	\$47.00	\$59.00	\$45.00	\$57.00	\$104.00	\$65.00	\$77.00	\$64.00	\$76.00	\$141.00
	ZZ	\$47.00	\$59.00	\$45.00	\$57.00	\$104.00	\$55.00	\$67.00	\$54.00	\$66.00	\$121.00
.8251" to 1.1350" 20.96mm to 28.83mm [06]	XX	\$76.00	\$89.00	\$71.00	\$84.00	\$160.00					
	X	\$58.00	\$71.00	\$55.00	\$68.00	\$126.00					
	Y	\$52.00	\$65.00	\$51.00	\$64.00	\$116.00					
	Z	\$48.00	\$61.00	\$47.00	\$60.00	\$108.00	\$70.00	\$83.00	\$67.00	\$80.00	\$150.00
	ZZ	\$48.00	\$61.00	\$47.00	\$60.00	\$108.00	\$60.00	\$73.00	\$57.00	\$70.00	\$130.00
1.1351" to 1.5100" 28.84mm to 38.35mm [07]	XX	\$80.00	\$94.00	\$78.00	\$92.00	\$172.00					
	X	\$63.00	\$77.00	\$60.00	\$74.00	\$137.00					
	Y	\$59.00	\$73.00	\$56.00	\$70.00	\$129.00					
	Z	\$52.00	\$66.00	\$50.00	\$64.00	\$116.00	\$75.00	\$89.00	\$73.00	\$87.00	\$162.00
	ZZ	\$52.00	\$66.00	\$50.00	\$64.00	\$116.00	\$65.00	\$77.00	\$62.00	\$74.00	\$139.00

Chrome Plated Tool Steel - Add 50% to Steel price.

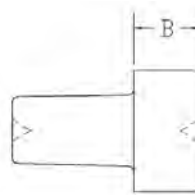
Blank Specs

Range	Handle No	B Go Member	B NoGo Member
[02]	0	0.593	0.281
[03]	1	0.750	0.312
[04]	2	1.000	0.375
[05]	3	1.250	0.500
[06]	4	1.500	0.625
[07]	5	1.625	0.750

QTY DISCOUNTS
2 pcs. & Up... Less 10%
 Combine identical sizes
 for quantity discount
(Excludes Class XX products)



Go



NoGo

Custom Trilocks from .7600" to 6.0100"

FOR LARGE DIMENSIONS

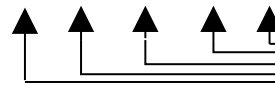
When you need to inspect large diameters, Trilock Plug Gages are your best solution. Much like Reversible Plug Gages, when one end wears out, simply turn the member around and continue gaging, significantly increasing the gaging life. Members are securely attached to your trilock handle with mounting bolts. Custom Plug Gage assemblies can be marked with your tool number. Go/NoGo assemblies include 1 line (up to 25 characters) of custom marking. These Trilock Plug Gages are available up to 6" in all class tolerances to meet your unique requirements.

- **Class XX, X, Y, Z or ZZ**
- **See page 116 for tolerance specifications**
- **Go, NoGo tolerances**
- **NIST traceable**
- **Tool Steel; 60/65 Rc (Cold Stabilized)**
- **Chrome Plated Tool Steel; 70/72 Rc**
- **4 microinch finish or better on Class XX or X**
- **Handles custom marked 1 line (up to 25 characters) included, additional text quoted upon request**
- **Inch handles – light blue**
- **Metric handles – yellow**
- **Certificate of Accuracy included**
- **See page 111 for Calibration Services**

How to Order:

19

0



Material

- [1] Tool Steel
- [2] Chrome Plated Tool Steel
- [4] Black Guard™

Tolerance

- [1] Class XX
- [2] Class X
- [3] Class Y
- [4] Class Z
- [5] Class ZZ

Range

- [01] .7600" to .9470" [19.30mm to 24.05mm]
- [02] .9471" to 1.1350" [24.06mm to 28.83mm]
- [03] 1.1351" to 1.5100" [28.84mm to 38.35mm]
- [04] 1.5101" to 2.0100" [38.36mm to 51.05mm]
- [05] 2.0101" to 2.5100" [51.06mm to 63.75mm]
- [06] 2.5101" to 3.0100" [63.76mm to 76.45mm]
- [07] 3.0101" to 3.5100" [76.46mm to 89.15mm]
- [08] 3.5101" to 4.0100" [89.16mm to 101.85mm]
- [09] 4.0101" to 4.5100" [101.86mm to 114.55mm]
- [10] 4.5101" to 5.0100" [114.56mm to 127.25mm]
- [11] 5.0101" to 5.5100" [127.26mm to 139.95mm]
- [12] 5.5101" to 6.0100" [139.96mm to 152.65mm]

Direction of Tolerance

- [1] Go [1 member, (Plus) unilateral tolerance]
- [2] NoGo [1 member, (Minus) unilateral tolerance]
- [3] Go/NoGo [2 members, (1) Plus, (1) Minus tolerance]
- [4] Go Assembly [1 member, Plus unilateral tolerance]
- [5] NoGo Assembly [1 member, Minus unilateral tolerance]

Package

- [1] Member only
- [2] Assembly [Gage(s) with Handle]

Size (Specify size of gage members)

Configure part number and add size of gage member.

Example: 191206320 - Go 2.4480"/NoGo 2.5000"

Handle Marking:

(up to 25 characters included at no charge)



Custom Trilocks from .7600" to 6.0100"

		Steel						Black Guard™									
Range	Tolerance	Price Go	Price Go	Price NoGo	Price NoGo	Price Go/NoGo	Tolerance	Price Go	Price Go	Price NoGo	Price NoGo	Price Go/NoGo					
	Class	Member	Assembly	Member	Assembly	Assembly	Class	Member	Assembly	Member	Assembly	Assembly					
.7600" to .9470" 19.30mm to 24.05mm [01]	XX	\$78.00	\$92.00	\$76.00	\$90.00	\$169.00	Z ZZ	\$68.00 \$48.00	\$82.00 \$62.00	\$50.00 \$43.00	\$64.00 \$57.00	\$133.00 \$106.00					
	X	\$58.00	\$72.00	\$56.00	\$70.00	\$129.00											
	Y	\$52.00	\$66.00	\$50.00	\$64.00	\$117.00											
	Z, ZZ	\$40.00	\$54.00	\$35.00	\$49.00	\$90.00											
.9471" to 1.1350" 24.06mm to 28.83mm [02]	XX	\$80.00	\$95.00	\$76.00	\$91.00	\$172.00	Z ZZ	\$56.00 \$50.00	\$71.00 \$65.00	\$51.00 \$43.00	\$66.00 \$58.00	\$123.00 \$109.00					
	X	\$60.00	\$75.00	\$58.00	\$73.00	\$134.00											
	Y	\$54.00	\$69.00	\$52.00	\$67.00	\$122.00											
	Z, ZZ	\$42.00	\$57.00	\$37.00	\$52.00	\$95.00											
1.1351" to 1.5100" 28.84mm to 38.35mm [03]	XX	\$82.00	\$98.00	\$78.00	\$94.00	\$177.00	Z ZZ	\$66.00 \$56.00	\$82.00 \$72.00	\$59.00 \$51.00	\$75.00 \$67.00	\$142.00 \$124.00					
	X	\$65.00	\$81.00	\$61.00	\$77.00	\$143.00											
	Y	\$56.00	\$72.00	\$54.00	\$70.00	\$127.00											
	Z, ZZ	\$48.00	\$64.00	\$43.00	\$59.00	\$108.00											
1.5101" to 2.0100" 38.36mm to 51.05mm [04]	XX	\$118.00	\$136.00	\$112.00	\$130.00	\$249.00	Z ZZ	\$98.00 \$86.00	\$116.00 \$104.00	\$90.00 \$78.00	\$108.00 \$96.00	\$207.00 \$183.00					
	X	\$94.00	\$112.00	\$90.00	\$108.00	\$203.00											
	Y	\$80.00	\$98.00	\$74.00	\$92.00	\$173.00											
	Z, ZZ	\$72.00	\$90.00	\$66.00	\$84.00	\$157.00											
2.0101" to 2.5100" 51.06mm to 63.75mm [05]	XX	\$130.00	\$150.00	\$124.00	\$144.00	\$275.00	Z ZZ	\$116.00 \$100.00	\$136.00 \$120.00	\$108.00 \$94.00	\$128.00 \$114.00	\$245.00 \$215.00					
	X	\$100.00	\$120.00	\$94.00	\$114.00	\$215.00											
	Y	\$92.00	\$112.00	\$88.00	\$108.00	\$201.00											
	Z, ZZ	\$86.00	\$106.00	\$80.00	\$100.00	\$187.00											
2.5101" to 3.0100" 63.76mm to 76.45mm [06]	XX	\$160.00	\$182.00	\$148.00	\$170.00	\$332.00	Z ZZ	\$124.00 \$108.00	\$146.00 \$130.00	\$108.00 \$94.00	\$130.00 \$116.00	\$256.00 \$226.00					
	X	\$120.00	\$142.00	\$110.00	\$132.00	\$254.00											
	Y	\$105.00	\$127.00	\$93.00	\$115.00	\$222.00											
	Z, ZZ	\$90.00	\$112.00	\$80.00	\$102.00	\$194.00											
3.0101" to 3.5100" 76.46mm to 89.15mm [07]	XX	\$230.00	\$252.00	\$202.00	\$224.00	\$476.00	Z ZZ	\$190.00 \$164.00	\$212.00 \$186.00	\$158.00 \$138.00	\$180.00 \$160.00	\$392.00 \$346.00					
	X	\$190.00	\$212.00	\$168.00	\$190.00	\$402.00											
	Y	\$155.00	\$177.00	\$133.00	\$155.00	\$332.00											
	Z, ZZ	\$138.00	\$160.00	\$116.00	\$138.00	\$298.00											
3.5101" to 4.0100" 89.16mm to 101.85mm [08]	XX	\$260.00	\$282.00	\$232.00	\$254.00	\$536.00	Z ZZ	\$232.00 \$200.00	\$254.00 \$222.00	\$194.00 \$168.00	\$216.00 \$190.00	\$470.00 \$412.00					
	X	\$210.00	\$232.00	\$182.00	\$204.00	\$436.00											
	Y	\$185.00	\$207.00	\$157.00	\$179.00	\$386.00											
	Z, ZZ	\$170.00	\$192.00	\$152.00	\$174.00	\$366.00											
4.0101" to 4.5100" 101.86mm to 114.55mm [09]	XX	\$380.00	\$402.00	\$308.00	\$330.00	\$732.00	Assemblies 3" and over will come on separate single-end handles										
	X	\$320.00	\$342.00	\$250.00	\$272.00	\$614.00											
	Y	\$298.00	\$320.00	\$220.00	\$242.00	\$562.00											
	Z, ZZ	\$290.00	\$312.00	\$216.00	\$238.00	\$550.00											
4.5101" to 5.0100" 114.56mm to 127.25mm [10]	XX	\$425.00	\$447.00	\$330.00	\$352.00	\$799.00											
	X	\$350.00	\$372.00	\$280.00	\$302.00	\$674.00											
	Y	\$325.00	\$347.00	\$250.00	\$272.00	\$619.00											
	Z, ZZ	\$310.00	\$332.00	\$240.00	\$262.00	\$594.00											
5.0101" to 5.5100" 127.26mm to 139.95mm [11]	XX	\$460.00	\$482.00	\$340.00	\$362.00	\$844.00											
	X	\$395.00	\$417.00	\$310.00	\$332.00	\$749.00											
	Y	\$360.00	\$382.00	\$280.00	\$302.00	\$684.00											
	Z, ZZ	\$350.00	\$372.00	\$270.00	\$292.00	\$664.00											
5.5101" to 6.0100" 139.96mm to 152.65mm [12]	XX	\$500.00	\$522.00	\$355.00	\$377.00	\$899.00											
	X	\$425.00	\$447.00	\$325.00	\$347.00	\$794.00											
	Y	\$380.00	\$402.00	\$305.00	\$327.00	\$729.00											
	Z, ZZ	\$370.00	\$392.00	\$295.00	\$317.00	\$709.00											

Chrome Plated Tool Steel - Add 50% to Steel price.

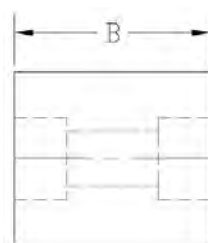
Range	Blank Specs		
	Handle No	B Go Member	B NoGo Member
[01]	2 1/2	1.250	0.750
[02]	3 1/2	1.375	0.750
[03]	4 1/2	1.500	0.750
[04]	5 1/2	1.875	0.875
[05]	6	2.000	0.875
[06] [07]	7	2.000	1.000
[08] [09] [10] [11] [12]	7	2.125	1.000

QTY DISCOUNTS

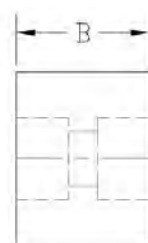
2 pcs. & Up... Less 10%

Combine identical sizes
for quantity discount

(Excludes Class XX products)



Go



NoGo

Custom Progressive Gages from .1501" to 1.5100"

QUICK GO/NOGO CHECKING

When you want to check parts quickly, Progressive Plug Gages are your best choice. You can inspect parts in one operation because both the Go and NoGo diameters are stepped on a single gage member. Members are securely attached to a taperlock handle. Custom Plug Gage assemblies can be marked with your tool number. Go/NoGo assemblies include 1 line (up to 25 characters) of custom marking. These Progressive Plug Gages are available up to 1.5100" in most class tolerances to meet your unique requirements.

- **Class X, Y, Z or ZZ**
- **See page 116 for tolerance specifications**
- **Go, NoGo tolerances**
- **NIST traceable**
- **Tool Steel; 60/62 Rc (Cold Stabilized)**
- **Chrome Plated Tool Steel; 70/72 Rc**
- **4 microinch finish or better on Class X**
- **Up to 1.5100" – Taperlock style**
- **Optional design: Custom Economy Step Gages, diameters up to 1" in Class Z or ZZ, see Custom Economy Step Gages on page 16**
- **Handles custom marked 1 line (up to 25 characters) included, additional text quoted upon request**
- **Inch handles – light blue**
- **Metric handles – yellow**
- **Certificate of Accuracy included**
- **See page 111 for Calibration Services**

How to Order:

20

0

Material

- [1] Tool Steel
- [2] Chrome Plated Tool Steel

Tolerance

- [2] Class X
- [3] Class Y
- [4] Class Z
- [5] Class ZZ

Range

- [02] .1501" to .2300" [3.82mm to 5.84mm]
- [03] .2301" to .3650" [5.85mm to 9.27mm]
- [04] .3651" to .5100" [9.28mm to 12.95mm]
- [05] .5101" to .8250" [12.96mm to 20.95mm]
- [06] .8251" to 1.1350" [20.96mm to 28.83mm]
- [07] 1.1351" to 1.5100" [28.84mm to 38.35mm]

Direction of Tolerance

- [1] Go/NoGo [1 member]

Package

- [1] Member only
- [2] Single-End Assembly [1 member, SE Handle]

Size (Specify size of gage members)

Configure part number and add size of gage member.

Example: **201205120 - Go 0.5250"/NoGo 0.5252**

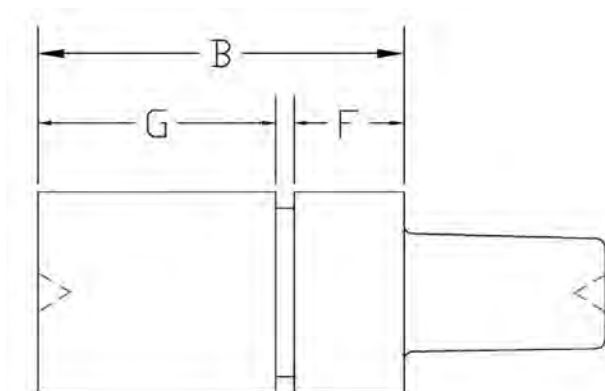
Handle Marking:

(up to 25 characters included at no charge)

Custom Progressive Gages from .1501" to 1.5100"

Range	Tolerance Class	Steel		Blank Specs			
		Price Member Only	Price Single-End Assembly	Handle No	B Dimension	G Dimension	F Dimension
.1501" to .2300" 3.82mm to 5.84mm [02]	X	\$90.00	\$102.00	0	.8125	.4062	.2812
	Y	\$85.00	\$97.00	0	.8125	.4062	.2812
	Z, ZZ	\$80.00	\$92.00	0	.8125	.4062	.2812
.2301" to .3650" 5.85mm to 9.27mm [03]	X	\$95.00	\$107.00	1	1.1875	.750	.3125
	Y	\$90.00	\$102.00	1	1.1875	.750	.3125
	Z, ZZ	\$80.00	\$92.00	1	1.1875	.750	.3125
.3651" to .5100" 9.28mm to 12.95mm [04]	X	\$100.00	\$112.00	2	1.500	1.000	.500
	Y	\$90.00	\$102.00	2	1.500	1.000	.500
	Z, ZZ	\$85.00	\$97.00	2	1.500	1.000	.500
.5101" to .8250" 12.96mm to 20.95mm [05]	X	\$100.00	\$112.00	3	1.875	1.250	.500
	Y	\$95.00	\$107.00	3	1.875	1.250	.500
	Z, ZZ	\$90.00	\$102.00	3	1.875	1.250	.500
.8251" to 1.1350" 20.96mm to 28.83mm [06]	X	\$110.00	\$123.00	4	2.125	1.375	.625
	Y	\$105.00	\$118.00	4	2.125	1.375	.625
	Z, ZZ	\$100.00	\$113.00	4	2.125	1.375	.625
1.1351" to 1.5100" 28.84mm to 38.35mm [07]	X	\$125.00	\$139.00	5	2.375	1.500	.750
	Y	\$110.00	\$124.00	5	2.375	1.500	.750
	Z, ZZ	\$100.00	\$114.00	5	2.375	1.500	.750

Chrome Plated Tool Steel - Add 50% to Steel price.



TAPERLOCK STYLE UP TO 1.5100"



Custom Hex Gages

INSPECT HEX HEADS

Hex Gages are perfect for inspecting machine head fasteners. Go/NoGo Hex Plug Gages are manufactured to ASME B107.17M and ASME B18.3. Special diameter hex gages are also available.

Hex Plug assemblies can be marked with your tool number. Go/NoGo assemblies include 1 line (up to 25 characters) of custom marking.

- **ASME B107.17M**
(Inch & Metric)
- **ASME B18.3 (Inch)**
- **ASME B18.3.6M**
(0.70 - 1.30mm)
- **ASME B18.3.1M**
(1.50 - 24.00mm)
- **Go, NoGo tolerances**
- **NIST traceable**
- **Tool Steel; 60/62 Rc**
- **Custom Square, Rectangular & other shapes available**
- **Handles custom marked 1 line (up to 25 characters) included, additional text quoted upon request**
- **See page 113 for Calibration Services**

ASME B18.3

Size	Order No.	Price
Inch		
.028"	212101030	\$360.00
.035"	212102030	\$340.00
.050"	212103030	\$300.00
1/16"	212104030	\$300.00
5/64"	212105030	\$300.00
3/32"	212106030	\$300.00
7/64"	212107030	\$300.00
1/8"	212108030	\$260.00
9/64"	212109030	\$260.00
5/32"	212110030	\$260.00
3/16"	212111030	\$260.00
7/32"	212112030	\$260.00
1/4"	212113030	\$260.00
5/16"	212114030	\$270.00
3/8"	212115030	\$285.00
7/16"	212116030	\$285.00
1/2"	212117030	\$285.00
9/16"	212118030	\$305.00
5/8"	212119030	\$305.00
3/4"	212120030	\$320.00
7/8"	212121030	\$350.00
1"	212122030	\$385.00
Metric		
0.70mm	212201030	\$360.00
0.90mm	212202030	\$340.00
1.30mm	212203030	\$300.00
1.50mm	212204030	\$300.00
2.00mm	212205030	\$300.00
2.50mm	212206030	\$300.00
3.00mm	212207030	\$260.00
4.00mm	212208030	\$260.00
5.00mm	212209030	\$260.00
6.00mm	212210030	\$260.00
8.00mm	212211030	\$260.00
10.00mm	212212030	\$270.00
12.00mm	212213030	\$285.00
14.00mm	212214030	\$285.00
17.00mm	212215030	\$305.00
19.00mm	212216030	\$320.00
22.00mm	212217030	\$350.00
24.00mm	212218030	\$385.00

Prices are for complete Go/NoGo Double-End Assemblies.

Custom Hex Gages

ASME B107.17M

Size	Order No.	Price	Size	Order No.	Price	Size	Order No.	Price
Inch								
1/8"	211101030	\$260.00	25/32"	211120030	\$305.00	1 15/16"	211139030	\$540.00
5/32"	211102030	\$260.00	13/16"	211121030	\$305.00	2"	211140030	\$540.00
3/16"	211103030	\$260.00	7/8"	211122030	\$305.00	2 1/16"	211141030	\$540.00
13/64"	211104030	\$260.00	15/16"	211123030	\$305.00	2 1/8"	211142030	\$540.00
7/32"	211105030	\$260.00	1"	211124030	\$305.00	2 3/16"	211143030	\$570.00
15/64"	211106030	\$260.00	1 1/16"	211125030	\$345.00	2 1/4"	211144030	\$570.00
1/4"	211107030	\$260.00	1 1/8"	211126030	\$345.00	2 5/16"	211145030	\$570.00
9/32"	211108030	\$270.00	1 3/16"	211127030	\$345.00	2 3/8"	211146030	\$570.00
5/16"	211109030	\$270.00	1 1/4"	211128030	\$345.00	2 7/16"	211147030	\$595.00
11/32"	211110030	\$270.00	1 5/16"	211129030	\$380.00	2 1/2"	211148030	\$595.00
3/8"	211111030	\$270.00	1 3/8"	211130030	\$415.00	2 9/16"	211149030	\$595.00
7/16"	211112030	\$270.00	1 7/16"	211131030	\$455.00	2 5/8"	211150030	\$595.00
1/2"	211113030	\$270.00	1 1/2"	211132030	\$460.00	2 11/16"	211151030	\$595.00
9/16"	211114030	\$270.00	1 9/16"	211133030	\$460.00	2 3/4"	211152030	\$700.00
19/32"	211115030	\$270.00	1 5/8"	211134030	\$460.00	2 13/16"	211153030	\$700.00
5/8"	211116030	\$285.00	1 11/16"	211135030	\$460.00	2 7/8"	211154030	\$700.00
21/32"	211117030	\$285.00	1 3/4"	211136030	\$460.00	2 15/16"	211155030	\$700.00
11/16"	211118030	\$285.00	1 13/16"	211137030	\$540.00	3"	211156030	\$700.00
3/4"	211119030	\$285.00	1 7/8"	211138030	\$540.00			
Metric								
2mm	211201030	\$265.00	18mm	211220030	\$285.00	37mm	211239030	\$460.00
3mm	211202030	\$265.00	19mm	211221030	\$305.00	38mm	211240030	\$460.00
3.2mm	211203030	\$260.00	20mm	211222030	\$305.00	39mm	211241030	\$460.00
4mm	211204030	\$260.00	21mm	211223030	\$305.00	40mm	211242030	\$460.00
5mm	211205030	\$260.00	22mm	211224030	\$305.00	41mm	211243030	\$460.00
5.5mm	211206030	\$260.00	23mm	211225030	\$305.00	42mm	211244030	\$460.00
6mm	211207030	\$260.00	24mm	211226030	\$305.00	43mm	211245030	\$460.00
6.3mm	211208030	\$260.00	25mm	211227030	\$305.00	44mm	211246030	\$540.00
7mm	211209030	\$270.00	26mm	211228030	\$345.00	45mm	211247030	\$540.00
8mm	211210030	\$270.00	27mm	211229030	\$345.00	46mm	211248030	\$540.00
9mm	211211030	\$270.00	28mm	211230030	\$345.00	47mm	211249030	\$540.00
10mm	211212030	\$270.00	29mm	211231030	\$345.00	48mm	211250030	\$540.00
11mm	211213030	\$270.00	30mm	211232030	\$345.00	49mm	211251030	\$540.00
12mm	211214030	\$270.00	31mm	211233030	\$345.00	50mm	211252030	\$540.00
13mm	211215030	\$270.00	32mm	211234030	\$380.00	55mm	211253030	\$570.00
14mm	211216030	\$270.00	33mm	211235030	\$380.00	60mm	211254030	\$570.00
15mm	211217030	\$270.00	34mm	211236030	\$420.00	65mm	211255030	\$600.00
16mm	211218030	\$285.00	35mm	211237030	\$420.00	70mm	211256030	\$700.00
17mm	211219030	\$285.00	36mm	211238030	\$455.00	75mm	211257030	\$700.00

Prices are for complete Go/NoGo Double-End Assemblies.

