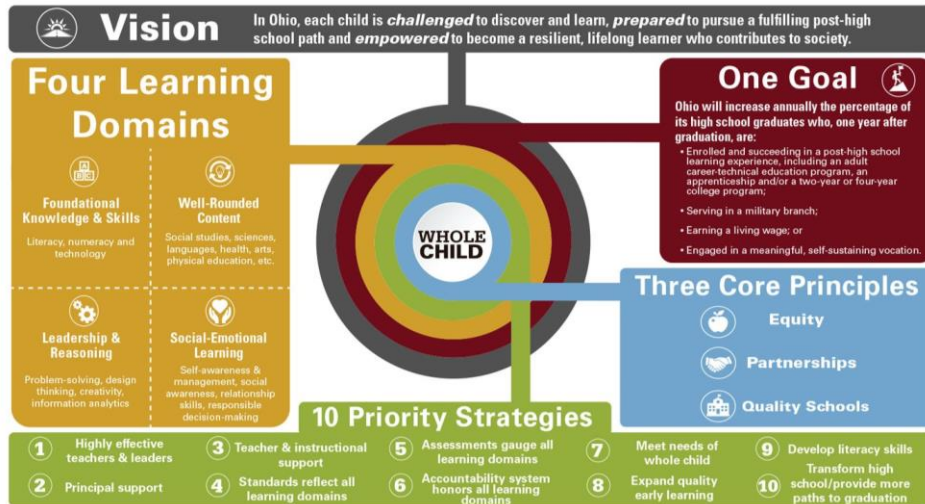


HARMFUL ELEMENTS OF SOCIAL AND EMOTIONAL LEARNING (SEL)

#EachChildOurFuture

In Ohio, each child is *challenged*, *prepared* and *empowered*.



1. **ALL 15 HARMFUL ELEMENTS OF COMPREHENSIVE SEX EDUCATION MAY BE PRESENT IN VARIOUS SEL PROGRAMS.**
WE STRONGLY EMPHASIZE CSE NUMBER 14: SEL UNDERMINES PARENTAL RIGHTS
2. **PROMOTES DATA COLLECTION** –Government data bases are collecting data on students to follow them for life to measure outcomes for the working classes of society and the “*collective good.*” Parents have not consented to this data collection and many responses are private information best suited between a counselor and a patient. Phone apps among others are also used for students to provide data.
3. **IMPERSONATES MENTAL HEALTH SERVICES** – Many SEL programs are designed to shape the child’s *developing brain* to accept particular worldviews regarding sexuality, racial attitudes, and other social issues under the guise of providing a mental health benefit.
4. **PROMOTES PSYCHOLOGICAL EVALUATIONS BY UNQUALIFIED TEACHERS** – “Interventions” may be “prescribed” by a teacher with limited training that may adversely impact a student’s permanent data file. Lack of education resources can mean that their “*evaluations*” are administered by untrained or poorly trained personnel.
5. **INVOLVES PROBLEMATIC PRIVACY POLICIES** may disclose student data that could be used against parents in regard to the personal choices they make for their children. If situations are detected regarding gender, sexual orientation or other “sexual rights” violations, this could become a window for family disruption or even separation.
6. **SEL IS A BELIEF SYSTEM OR WORLDVIEW WITH OCCULT ORIGINS** – SEL was originally hosted at the Fetzer Institute, where “New Age” religion was founded. Mr. Fetzer is also known as the founder of the Luciferian Publishing Company.
7. **SPIRITUALLY, MENTALLY AND EMOTIONALLY ABUSIVE** –Sacred family beliefs may be classified as unkind or unacceptable instead of a matter of morality. SEL teachings force students to choose between two leaders in authority over them (their parents versus their teacher) with opposing directives. Children question: who should I listen to?



8. **REQUIRES THAT STUDENTS ACCEPT FALSE CONCEPTS – SOGI (Sexual Orientation and Gender Identity)** These identities are not based in science and present false concepts as if they are based in factual truth. Some assignments force students to produce false confessions or coerced admissions
9. **SYSTEMATICALLY UNDERMINES ESTABLISHED PROTOCOLS AND LAWS**—according to CASEL: “*SEL was introduced as a **FRAMEWORK** that addresses the needs of young people and helps to align and coordinate school programs and programming.*” By asserting this non-academic, incognito “framework”, they are able to circumvent parental rights protections such as Health Advisory Committees, parent reviews, opt-out forms, etc.
10. **PREVENTS MEANINGFUL REGULATION OR SURVEILANCE-** Integrated into the publisher’s live website, updates and changes can occur at any time. Lessons may at first seem helpful and desirable with little to no controversial elements; in some cases, later investigations reveal a “bait and switch” tactic with controversial lesson updates, (woke ideology, CRT, etc.). SEL programs may also be coupled with virtual learning software platforms which makes it difficult to continuously monitor content.
11. **REVISIONIST LESSONS –** Due to the progressive integration of SEL with other classes, revisionist history, science, “human” geography and even math concepts have been observed in schools that fully embrace SEL.
12. **SCHOOLS ARE HEAVILY FUNDED WITH TARGETED GRANTS –**This point alone requires constant time-consuming investigation.
13. **WAS FOUNDED & FINANCED BY GLOBALISTS –** CASEL’s website reveals its corporate and foundational connections. Corporate Partners: Allstate Foundation, Chan-Zuckerberg Initiative, LG, Susan Crown Exchange. Foundation Partners: Bill & Melinda Gates Foundation, New Profit, The NoVo Foundation (Warren Buffet family), Founders: Eileen Rothschild Growald and more. The goal of these organizations is global education and indoctrination.
14. **PROMOTES ACTIVISM, ALLEGIANCE AND DIVISION-** SEL is promoted as the “lever for equity and social justice” Critical Race Theory and Marxist lessons are taught regarding oppression, oppressors, “intersectionality”, race, gender, and religion in ways that promote illegal, sectarian concepts. Community organizing events and afterschool programs are routinely promoted. CASEL is committed to the morally bankrupt “woke doctrine” of radical progressives. Students even recite a “pledge” that ends with “*because, when we **commit** to social and emotional learning, we can build stronger schools and communities today, and a more just and caring world tomorrow.*”
15. **REQUIRES SPECIAL KNOWLEDGE TO EXPOSE SHIELDING STRATEGIES- BUT YOU CAN FIGHT BACK WITH THE INFORMATION BELOW:**
You will need digital access to review curriculum. This is accomplished with your own “student account” and you must insist that the administrators provide it to you, (if necessary, use an open record request).
 - Administrators may say you need the publisher’s permission to review curriculum. Tell them digital curriculum is subject to review just like a book. Show them ORC 3313.60 law on parental rights of review.
 - If a school uses the excuse of “FERPA” (Family Educational Rights and Privacy Act) to refuse access, insist you only want to see curriculum, not personal work completed by students.
 - Copyright infringement is another tactic they may use to discourage access. Politely tell them you are just reviewing it and not selling it.
 - Schools may try to provide “scope and sequence” documents for the program to see if you will accept that as a curriculum. This is more like a table of contents, not the actual curriculum.
 - The Protect Ohio Children Opt-Out Form on our website may help to opt students out of these classes – use it to push back and to let the school administration know where you stand. Sharing this information with the entire community is important for change.

