

# THE PROTEA

Elizabeth Bowers Zambia Education Fund

Vol. XI No. 2

Breaking the cycle of poverty through education

December 2016



## Secondary School Construction Underway



We are excited to report that Phase I of the EBZEF/World Vision/Lumwana West Secondary School project nears completion! Thanks to your support, construction is well underway, with two teachers' houses, plumbed and wired, ready for occupancy in early December 2016. Two three-classroom blocks are nearly finished and should be ready for the new school year in January 2017. An ablution block (lavatory) for boys, originally planned for Phase II, is almost ready for use.

Water and electricity are not yet available, nor are the "soak away [septic] fields." Construction of the two-classroom pre-school building will begin when the three-classroom blocks are completed, as it will be built by the same construction company.

### Phase II Fund-Raising Underway

The success of Phase I inspires us all to support the secondary school project further and to maintain its momentum. Phase II includes 7 more teachers' houses, 2 more three-classroom blocks, and an office block. It will include a water borehole plus an ablution block for girls. With one ablution block already paid for, the cost for Phase II is \$915,000, with necessary adjustments for exchange rate fluctuation and inflation. ☞



Teacher's House

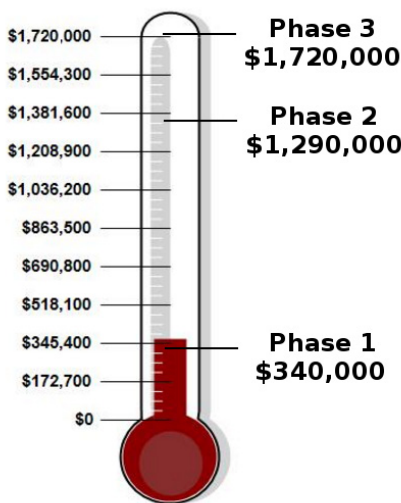


Three-block classroom

World Vision Zambia (WVZ) oversees all construction and has established a high degree of quality control. WVZ is working on water/sanitation issues.

Thanks to your generosity and the help of World Vision, Phase I has been fully funded at a total cost of \$340,000 with an additional \$35,000 (from Phase II) for the ablution block. Now that the village dream is materializing, there is much excitement in the Lumwana West Community. The solution to extreme classroom overcrowding and severely limited teacher housing is in sight! Having World Vision as a partner provides strong project management and administration, making sure that our limited dollars are effectively and efficiently spent. World Vision is also a powerful funding partner. ☞

### EBZEF Village Dream



**Total Raised So Far: \$375,000**

### Help Us Meet Our Phase II Goal



**Great news!** Your gift of support for Phase II can now have **DOUBLE** the impact! Thanks to a generous pledge, EBZEF is offering a **Matching Gift Challenge** through the end of 2016. Your year-end donations to EBZEF will be doubled, up to \$20,000, through December 31st, so please give generously. Each contribution will help ensure that our critical project continues to move forward. ☞



**Help EBZEF  
educate the  
Whole Girl!**

**Double your impact! Donate by December 31st to help us meet the challenge!**

Full details at:

[ebzef.org/news/secondaryschool/](http://ebzef.org/news/secondaryschool/)



PHASE	PROJECT ELEMENT	COST
I	2 Three-room Classroom Blocks, 2 Teachers' Houses, Two-room Preschool Classroom Block	\$340,000 *DONE*
II	2 Three-room Classroom Blocks, 7 Teachers' Houses, Office Block/ Furn, Water, 2 Lavatories	\$950,000
III	1 Three-room Classroom Block, Computer Lab/Computers, School Hall, Internet/Solar	\$430,000
	<b>Total Project Cost</b>	<b>\$1,720,000</b>

# Congratulations to Beth's Ladies!

EBZEF is proud of Beth's Girls graduating in 2016 from college/vocational schools. They have been preparing to "give back," as Beth did, through service to their families, their community, and their nation. As leaders in their community, they have now become Beth's Ladies!

**Julia Salumawu** graduated in physiotherapy from Evelyn Hone College. **Melba Chitala** completed her internship from the Roan Antelope School of Midwifery. **Prudence Masanyinga** will complete a five-year program in sociology from Mulungushi University. **Sandra Kamulosu** and **Agatha Sangenjo** will graduate from Zambia College of Open Education with secondary teaching diplomas. **Priscovia Sangenjo** now teaches language and religion at Lumwana West Secondary School. 🍀



Julia Salumawu



Priscovia Sangenjo



Prudence Masanyinga



Melba Chitala

## EBZEF Scholarships Progress

As the secondary school develops in Lumwana West, there is now no need to send Beth's Girls to Mwinilunga High School (MHS), 60 kilometers north of the village, where they pay tuition/boarding fees. EBZEF's secondary school scholarships have dropped a class each year, with 2016 the final year of support for MHS. Currently, EBZEF supports Beth's Girls pursuing education beyond high school.

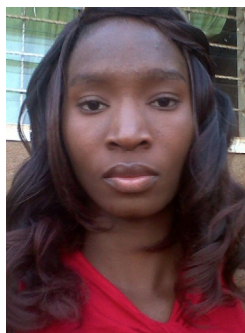
The shift in scholarship support to tertiary education has not affected the number of girls going to secondary school in their community. With your continuing generosity and aid, EBZEF has changed the way the village views the education of women. You have helped to change the way the women view themselves as educated community leaders and contributors! No longer is the bride of choice a 12-year-old girl who will bear 8-10 children. It is now the educated woman, who first gets her education, then her job, then a husband, and only then her children. Beth's Girls have become their own role models! 🍀

## Beth's Girls Continue Education

As **Mulenga Chilufya**, **Brenda Sambaulu**, **Karren Sweta**, and **Gloria Njolomba**, the final class of Beth's Girls, complete their studies at Mwinilunga High School, they look forward to continuing their education. Role models from the village include **Kutemba Njolomba**, who, in 2017, will be in year 4 of a 5-year program at Mukuba University College of Education; **Charity Mashata** (year 3 of 3) and **Stella Masanyinga** (year 2 of 3) at Immaculata Visitation Teacher's College; **Ruth Sanama**, **Sandra Kalumba**, and **Rachel Njolomba** (all in year 2 of 3) at SW College of Education; and **Visaka Kapalu** (year 2 of 7) at Lusaka Apex Medical University. 🍀



Sandra Kalumba



Ruth Sanama



Sandra Kamulosu

## Educating the Whole Girl

EBZEF's vision of educating the "Whole Girl" is coming into being. From pre-school, through basic and secondary schools, through college and vocational training, plus the Memorial Library, your continuing support and encouragement of EBZEF's literacy projects help to educate an entire community. THANK YOU! 🍀



Stella Masanyinga & Charity Mashata

## THANK YOU TO DONORS


From Beth's Girls

"Your kindness and never-ending encouragement keep me going and focused on what I want to achieve. This is a priceless opportunity that you have offered me to make and secure my future. Had it not been for you, I don't know what would have become of me."

—Charity Mashata




## American Rose

Judith Singer's **Elizabeth Bowers rose** was formally introduced in **American Rose** magazine in the September/October issue of 2016. It was also a "New Introduction" in the **Rogue Valley Roses Bulletin** of September 9, 2016, where it is available for purchase. Congratulations, Jude! 



## World Beat 2016

EBZEF volunteers Eden Rose Brown and Jennifer Bowers carry the Zambian flag in the Parade of Nations at the June 2016 World Beat Festival in Salem, Oregon. Thanks to all our volunteers, donors, and old and new friends who stopped by the EBZEF booth to learn about our programs in NW Zambia! 



### HELP SUPPORT EBZEF

JOIN our Facebook page:  
**facebook.com/EBZEF**

SHARE posts with your friends.

VISIT our business profile on LinkedIn:

**linkedin.com/groups/4036740**

CONNECT with Twitter at:

**twitter.com/EBZEF**

CHECK OUT our website: **ebzef.org**

**facebook** **twitter** **LinkedIn**



**Give a life-altering gift  
this holiday season!**


Help change lives and offer hope to Beth's Girls and their community in NW Zambia.

So little goes so far:

- \$50 funds 1 pre-school table
- \$75 funds 5 pre-school chairs
- \$90 funds 2 classroom whiteboards
- \$100 funds 2 dictionaries for Library
- \$150 funds 1 teacher's table & chair
- \$600 funds 1 Library laptop
- \$2,300 funds a year of college study
- \$50,000 funds a teacher's house
- \$60,000 funds a high school classroom

Amounts vary due to fluctuating exchange rate between US \$ and Zambian Kwacha.

## Pre-school in Full Swing

Happy pre-school children head off to a future education for which they are well-prepared, thanks to your support and encouragement. Construction on the two-classroom pre-school block will begin as soon as the two classroom blocks for the secondary school are complete. 




Pre-school is over for the day!




## Educational Outreach Schirle Elementary School

Schirle Elementary School will hold a third Penny Drive to purchase furniture and supplies for the new pre-school classrooms. The children of Schirle will again help the children of Lumwana West on the other side of the world to begin their educational journey.

## South Salem High School

Zia Habecost, President, says the Zambia Club of South Salem High School aims to learn about Education & Development in Lumwana West, Zambia, and works to support the effort of EBZEF. 

## Library Thank-You

The Elizabeth Bowers Memorial Library is the largest in the NW Province. Chikondi Phiri, Deputy Country Director of World Vision Zambia, created a thank-you video for EBZEF from the Lumwana West community. View the video at <http://www.ebzef.org/about/video/> and see what strides toward literacy your support has created! 



EBZEF is a 501(c)(3)  
nonprofit corporation. All  
contributions are fully  
tax deductible.



## New EBZEF Advisory Board Member

**WELCOME CASSANDRA!**

EBZEF welcomes Cassandra Farrin to its Advisory Board. A longtime EBZEF supporter, Cassandra has served as THE PROTEA Newsletter Editor since 2008. As a scholar, writer, and professional editor, she has worked to strengthen intercultural relationships locally and globally, especially by sharing stories that change the way we see one another. She is Editor of Polebridge Press and Marketing Director of Westar Institute. A US-UK Fulbright scholar, she has an M.A. in Religious Studies from Lancaster University, England, and a B.A. in Religious Studies from Willamette University. 



# Yes!

I want to **DOUBLE** my support with a matching donation!  
I have enclosed a donation of \$ \_\_\_\_\_ ☐ As a gift

**From:**

Name: \_\_\_\_\_

Address: \_\_\_\_\_

Email: \_\_\_\_\_

**To:**

Name: \_\_\_\_\_

Address: \_\_\_\_\_

Email: \_\_\_\_\_

*If donating as a gift, please include your name and address, as well.*



**Elizabeth Bowers Zambia Education Fund**

PO Box 294

Salem, OR 97308-0294

[www.ebzef.org](http://www.ebzef.org)

503-585-4605

December 2016







Ablution block and EWB science lab foundation



Board Member Angela Wanak & family enjoy the World Beat Festival



Happy Holidays!



Julia & Melba in full graduation attire



## The Elizabeth Bowers Zambia Education Fund

*One life made the connection.  
Now many carry on the vision of caring.*



## Our Mission

**EBZEF empowers women, children, and their community in Lumwana West, Zambia, to break the cycle of poverty through education.**

## Our Vision

Elizabeth Rachel Bowers (1979–2002) shared her compassionate spirit with the people of her village as a Peace Corps volunteer. The education legacy sustains Beth's vision of service and global awareness by empowering young women to build positive change from within, to become leaders and educators, and to improve the quality of life in their communities.

## Peace Corps Anniversary

Beth's Peace Corps group has celebrated its 15th anniversary from its initial induction into service in 2001 in NW Zambia. Congratulations to you all!

241 Peace Corps Volunteers (PCVs) are currently working in Zambia on agriculture, community economic development, education, environmental, and health projects. PCVs live in and with local communities, learning to speak their tribe's language, eating the same food, and integrating into their host families.

## Remembering Beth



Beth Bowers, 3rd from left, front row

More than 1,790 PCVs have served in Zambia since the program was established in 1994. It is one of the larger Peace Corps programs

in Africa. After almost five decades of service, the Peace Corps is more vital than ever and still growing.

In 2017, EBZEF will celebrate 15 years in the community of Lumwana West in NW Zambia, where Beth served as a PCV. We have worked to sustain Beth's vision of global peace and understanding.

*"The best way to find yourself is to lose yourself in the service of others."*

—Mahatma Gandhi

Beth found herself in Zambia. 